

## Product datasheet for **AR52023PU-S**

### Cathepsin Z (23-306, His-tag) Mouse Protein

#### Product data:

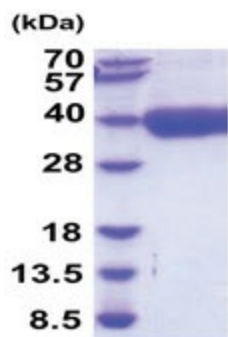
Product Type:	Recombinant Proteins
Description:	Cathepsin Z (23-306, His-tag) mouse protein, 50 µg
Species:	Mouse
Expression Host:	Insect
Expression cDNA Clone or AA Sequence:	ARARLYFRSG QTCYHPIRGD QLALLGRRTY PRPHEYLSPA DLPKNWDWRN VNGVNYASVT RNQHIPPQYCG SCWAHGSTSA MADRINIKRK GAWPSILLSV QNVIDCGNAG SCEGGNDLPV WEYAHKHGIP DETCNNYQAK DQDCDKFNQC GTCTEFKECH TIQNYTLWRV GDYGSLSGRE KMMAEIYANG PISCGIMATE MMSNYTGGIY AEHQDQAVIN HIISVAGWGV SNDGIEYWIV RNSWGEPWGE KGWMRIVTST YKGGTGDSYN LAIESACTFG DPIVLEHHHH HH
Tag:	His-tag
Predicted MW:	32.8 kDa
Concentration:	lot specific
Purity:	>95% by SDS – PAGE
Buffer:	Presentation State: Purified State: Liquid purified protein Buffer System: Phosphate Buffered Saline (pH 7.4) containing 10% glycerol.
Endotoxin:	< 1.0 EU per 1 microgram of protein (determined by LAL method)
Preparation:	Liquid purified protein
Storage:	Store undiluted at 2-8°C for one week or (in aliquots) at -20°C to -80°C for longer. Avoid repeated freezing and thawing.
Stability:	Shelf life: one year from despatch.
RefSeq:	<a href="#">NP_071720</a>
Locus ID:	64138
UniProt ID:	<a href="#">Q9WUU7</a> , <a href="#">Q54516</a>
Cytogenetics:	2 97.94 cM
Synonyms:	AI787083; AU019819; CTS; CTSX; D2Wsu143; D2Wsu143e



[View online »](#)

**Summary:**

This gene encodes a member of the peptidase C1 (papain) family of cysteine proteases. The encoded preproprotein is proteolytically processed to generate a mature enzyme with carboxypeptidase activity. An enzymatically inactive form of the protein, that is associated with the propeptide, may be involved in cancer cell invasion and proliferation. Homozygous knockout mice for this gene exhibit impaired cancer cell invasion in a breast cancer model. [provided by RefSeq, Aug 2015]

**Product images:**

15% SDS-PAGE (3ug)