

Product datasheet for **AR52014PU-S**

METTL11A / C9orf32 (1-223, His-tag) Human Protein

Product data:

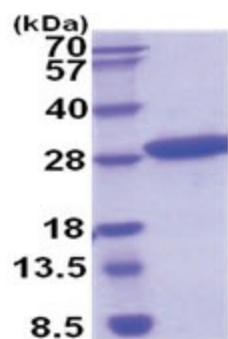
| | |
|--|---|
| Product Type: | Recombinant Proteins |
| Description: | METTL11A / C9orf32 (1-223, His-tag) human protein, 20 µg |
| Species: | Human |
| Expression Host: | E. coli |
| Expression cDNA Clone or AA Sequence: | MGSSHHHHHH SSGLVPRGSH MGSEFMTSEV IEDEKQFYISK AKTYWKQIPP TVDGMLGGYG HISSIDINSS RKFLQRFLRE GPNKTGTSCA LDCGAGIGRI TKRLLLPLFR EVDMDVITED FLVQAKTYLG EEGKRVRNYF CCGLQDFTPE PDSYDVIWIQ WVIGHLTDQH LAEFLRRCKG SLRPNGIIVI KDNMAQEGVI LDDVDSSVCR DLDVVRRIIC SAGLSLLAEE RQENLPDEIY HVYSFALR |
| Tag: | His-tag |
| Predicted MW: | 28.1 kDa |
| Concentration: | lot specific |
| Purity: | >95% by SDS - PAGE |
| Buffer: | Presentation State: Purified State: Liquid purified protein Buffer System: 20 mM Tris-HCl buffer (pH 8.0) containing 0.15M NaCl, 10% glycerol |
| Preparation: | Liquid purified protein |
| Storage: | Store undiluted at 2-8°C for one week or (in aliquots) at -20°C to -80°C for longer. Avoid repeated freezing and thawing. |
| Stability: | Shelf life: one year from despatch. |
| RefSeq: | NP_001273725 |
| Locus ID: | 28989 |
| UniProt ID: | Q9BV86 , A0A024R8E4 |
| Cytogenetics: | 9q34.11 |
| Synonyms: | AD-003; C9orf32; HOMET1A; METTL11A; NRMT; NRMT1; NTM1A |
| Summary: | The METTL11A gene encodes an N-terminal methyltransferase for the RAN (MIM 601179) guanine nucleotide exchange factor regulator of chromosome condensation 1 (RCC1; MIM 179710). METTL11A enzyme alpha-N-methylates other protein targets such as SET (MIM 600960) and RB (MIM 180200).[supplied by OMIM, Nov 2010] |



[View online »](#)

Protein Families: Druggable Genome

Product images:



15% SDS-PAGE (3ug)