

Product datasheet for **AR52014PU-N**

METTL11A / C9orf32 (1-223, His-tag) Human Protein

Product data:

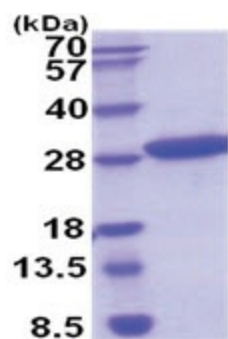
Product Type:	Recombinant Proteins
Description:	METTL11A / C9orf32 (1-223, His-tag) human protein, 0.1 mg
Species:	Human
Expression Host:	E. coli
Expression cDNA Clone or AA Sequence:	MGSSHHHHHH SSGLVPRGSH MGSEFMTSEV IEDEKQFYISK AKTYWKQIPP TVDGMLGGYG HISSIDINSS RKFLQRFLRE GPNKTGTSCA LDCGAGIGRI TKRLLLPLFR EVDMDVITED FLVQAKTYLG EEGKRVRNYF CCGLQDFTPE PDSYDVIWIQ WVIGHLTDQH LAEFLRRCKG SLRPNGIIVI KDNMAQEGVI LDDVDSSVCR DLDVVRRIIC SAGLSLLAEE RQENLPDEIY HVYSFALR
Tag:	His-tag
Predicted MW:	28.1 kDa
Concentration:	lot specific
Purity:	>95% by SDS - PAGE
Buffer:	Presentation State: Purified State: Liquid purified protein Buffer System: 20 mM Tris-HCl buffer (pH 8.0) containing 0.15M NaCl, 10% glycerol
Preparation:	Liquid purified protein
Storage:	Store undiluted at 2-8°C for one week or (in aliquots) at -20°C to -80°C for longer. Avoid repeated freezing and thawing.
Stability:	Shelf life: one year from despatch.
RefSeq:	NP_001273725
Locus ID:	28989
UniProt ID:	Q9BV86 , A0A024R8E4
Cytogenetics:	9q34.11
Synonyms:	AD-003; C9orf32; HOMET1A; METTL11A; NRMT; NRMT1; NTM1A
Summary:	The METTL11A gene encodes an N-terminal methyltransferase for the RAN (MIM 601179) guanine nucleotide exchange factor regulator of chromosome condensation 1 (RCC1; MIM 179710). METTL11A enzyme alpha-N-methylates other protein targets such as SET (MIM 600960) and RB (MIM 180200).[supplied by OMIM, Nov 2010]



[View online »](#)

Protein Families: Druggable Genome

Product images:



15% SDS-PAGE (3ug)