

## Product datasheet for **AR51958PU-N**

### C-reactive protein (CRP) (20-230, His-tag) Rat Protein

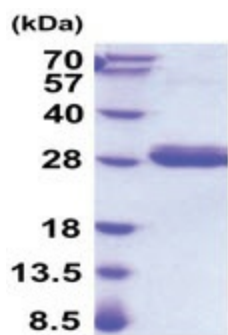
#### Product data:

Product Type:	Recombinant Proteins
Description:	C-reactive protein (CRP) (20-230, His-tag) rat protein, 0.25 mg
Species:	Rat
Expression Host:	Insect
Expression cDNA Clone or AA Sequence:	HEDMSKQAFV FPGVSATAYV SLEAESKKPL EAFTVCLYAH ADVSRFSIF SYATKTSFNE ILLFWTRGQG FSIAVGGPEI LFSASEIPEV PTHICATWES ATGIVELWLD GKPRVRKSLQ KGYIVGTNAS IILGQEQDSY GGGFDANQSL VGDIGDVMW DFVLSPEQIN AVYVGRVFSP NVLNRWALKY ETHGDVFIKQ QLWPLTDCCE SHHHHHH
Tag:	His-tag
Predicted MW:	24.1 kDa
Concentration:	lot specific
Purity:	>95% by SDS - PAGE
Buffer:	Presentation State: Purified State: Liquid purified protein Buffer System: Phosphate Buffered Saline (pH 7.4) containing 10% glycerol.
Endotoxin:	< 1.0 EU per 1 microgram of protein (determined by LAL method)
Preparation:	Liquid purified protein
Storage:	Store undiluted at 2-8°C for one week or (in aliquots) at -20°C to -80°C for longer. Avoid repeated freezing and thawing.
Stability:	Shelf life: one year from despatch.
RefSeq:	<a href="#">NP_058792</a>
Locus ID:	25419
UniProt ID:	<a href="#">P48199</a> , <a href="#">H6X2W5</a>
Cytogenetics:	13q24
Synonyms:	Aa1249; Ab1-341; Ab2-196; Ac1-114; Ac2-069; Ac1262; Ba2-693
Summary:	glycoprotein of the acute phase response [RGD, Feb 2006]



[View online »](#)

Product images:



15% SDS-PAGE (3ug)