

## Product datasheet for **AR51955PU-S**

### PGM2 (1-612, His-tag) Human Protein

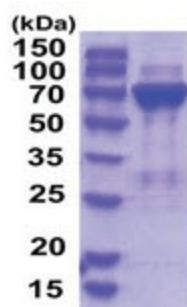
#### Product data:

Product Type:	Recombinant Proteins
Description:	PGM2 (1-612, His-tag) human protein, 0.1 mg
Species:	Human
Expression Host:	E. coli
Expression cDNA Clone or AA Sequence:	MGSSHHHHHH SSGLVPRGSH MGSMAAPEGS GLGEDARLDQ ETAQWLRWDK NSLTLEAVKR LIAEGNKEEL RKCFGARMEF GTAGLRAAMG PGISRMNDLT IIQTTQGFCR YLEKQFSDLK QKGIVISFDA RAHPSSGGSS RRFARLAATT FISQGIPVYL FSDITPTPFV PFTVSHLKLK AGIMITASHN PKQDNGYKVY WDNGAQIISP HDKGISQAIE ENLEPWPQAW DDSLIDSSPL LHNPSASINN DYFEDLKKYC FHRSVNRETK VKFVHTSVHG VGHSFVQSAF KAFDLVPPEA VPEQKDPDPE FPTVKYPNPE EGKGVLTLSF ALADKTKARI VLANDPDADR LAVAQKDSG EWRVFSGNEL GALLGWWLFT SWKEKNQDRS ALKDTYMLSS TVSSKILRAI ALKEGFHFEE TLTGFKWMGN RAKQLIDQGK TVLFAFEEAI GYMCCPFVLD KDGVSAAVIS AELASFLATK NLSLSQQLKA IYVEYGYHIT KASYFICHQ ETIKKLFENL RNYDGKNNYP KACGKFEISA IRDLTTGYDD SQPDKKAVLP TSKSSQMITF TFANGGVATM RTSGTPEPKI YYAELCAPPG NSDPEQLKKE LNELVSAIEE HFFQPQKYNL QPKAD
Tag:	His-tag
Predicted MW:	70.7 kDa
Concentration:	lot specific
Purity:	>85% by SDS - PAGE
Buffer:	Presentation State: Purified State: Liquid purified protein Buffer System: Phosphate buffered saline (pH 7.4) containing 10% glycerol
Preparation:	Liquid purified protein
Storage:	Store undiluted at 2-8°C for one week or (in aliquots) at -20°C to -80°C for longer. Avoid repeated freezing and thawing.
Stability:	Shelf life: one year from despatch.
RefSeq:	<a href="#">NP_060760</a>
Locus ID:	55276
UniProt ID:	<a href="#">Q96G03</a>



[View online »](#)

<b>Cytogenetics:</b>	4p14
<b>Synonyms:</b>	MSTP006
<b>Summary:</b>	Catalyzes the conversion of the nucleoside breakdown products ribose-1-phosphate and deoxyribose-1-phosphate to the corresponding 5-phosphopentoses. May also catalyze the interconversion of glucose-1-phosphate and glucose-6-phosphate. Has low glucose 1,6-bisphosphate synthase activity.[UniProtKB/Swiss-Prot Function]
<b>Protein Pathways:</b>	Amino sugar and nucleotide sugar metabolism, Galactose metabolism, Glycolysis / Gluconeogenesis, Metabolic pathways, Pentose phosphate pathway, Starch and sucrose metabolism

**Product images:**

15% SDS-PAGE (3ug)