

Product datasheet for **AR51950PU-S**

gldA (1-367, His-tag)

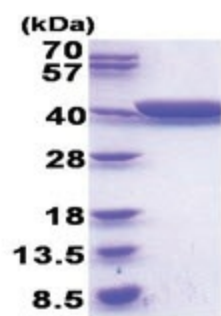
Product data:

Product Type:	Recombinant Proteins
Description:	Recombinant E. coli gldA protein, fused to His-tag at N-terminus, was expressed in E.coli and purified by using conventional chromatography techniques.
Species:	Escherichia coli
Expression Host:	E. coli
Expression cDNA Clone or AA Sequence:	MGSSHHHHHH SSGLVPRGSH MGSMDRIIQS PGKYIQGADV INRLGEYLKP LAERWLVVGDKFVLGFAQST VEKSFKDAGL VVEIAPFGGE CSQNEIDRLR GIAETAQCGA ILGIGGGKTLDTAKALAHFM GVPVAIAPTI ASTDAPCSAL SVIYTDEGEF DRYLLLNNP NMVIVDTKIV AGAPARLLAAGIGDALATWF EARACSRSGA TTMAGGKCTQ AALALAELCY NTLLEEGERA MLAAEQHVVT PALERVIEAN TYLSGVGFES GGLAAAHAVH NGLTAIPDAH HYYHGEKVAF GTLTQLVLEN APVEEIVTVA ALSHAVGLPI TLAQLDIKED VPAKMRIVAE AACAEGETIH NMPGGATPDQ VYAALLVADQ YGQRFLQEW
Tag:	His-tag
Predicted MW:	41.1 kDa
Concentration:	1.0 mg/ml (determined by bradford assay)
Purity:	> 95 % by SDS - PAGE
Buffer:	Phosphate buffered saline (pH7.4), 10% glycerol.
Bioactivity:	> 14 Units/ml One unit will oxidize 1.0 umole of glycerol to dihydroxyacetone per minute at pH 8.0 at 25C
Preparation:	Liquid purified protein



[View online »](#)

Product images:



15% SDS-PAGE (3ug)