

Product datasheet for **AR51924PU-S**

CDw293 / BMPR1B (14-126, His-tag) Human Protein

Product data:

Product Type:	Recombinant Proteins
Description:	CDw293 / BMPR1B (14-126, His-tag) human protein, 20 µg
Species:	Human
Expression Host:	E. coli
Expression cDNA Clone or AA Sequence:	MGSSHHHHHH SSGLVPRGSH MGSKKEDGES TAPTPRPKVL RCKCHHHHCPE DSVNNICSTD GYCFTMIEED DSGLPVVTSG CLGLEGSDFQ CRDTPIPHQR RSIECCTERN ECKNDLHPTL PPLKNRDFVD GPIHHR
Tag:	His-tag
Predicted MW:	15.1 kDa
Concentration:	lot specific
Purity:	>80% by SDS - PAGE
Buffer:	Presentation State: Purified State: Liquid purified protein Buffer System: Phosphate buffered saline (pH 7.4) containing 20% glycerol, 1 mM DTT, 0.1 mM PMSF
Preparation:	Liquid purified protein
Storage:	Store undiluted at 2-8°C for one week or (in aliquots) at -20°C to -80°C for longer. Avoid repeated freezing and thawing.
Stability:	Shelf life: one year from despatch.
RefSeq:	NP_001194
Locus ID:	658
UniProt ID:	O00238
Cytogenetics:	4q22.3
Synonyms:	ALK-6; ALK6; AMDD; BDA1D; BDA2; CDw293



[View online »](#)

Summary:

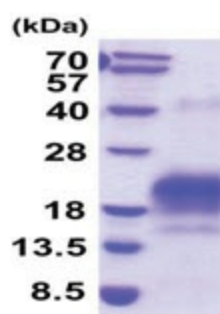
This gene encodes a member of the bone morphogenetic protein (BMP) receptor family of transmembrane serine/threonine kinases. The ligands of this receptor are BMPs, which are members of the TGF-beta superfamily. BMPs are involved in endochondral bone formation and embryogenesis. These proteins transduce their signals through the formation of heteromeric complexes of 2 different types of serine (threonine) kinase receptors: type I receptors of about 50-55 kD and type II receptors of about 70-80 kD. Type II receptors bind ligands in the absence of type I receptors, but they require their respective type I receptors for signaling, whereas type I receptors require their respective type II receptors for ligand binding. Mutations in this gene have been associated with primary pulmonary hypertension. Several transcript variants encoding two different isoforms have been found for this gene. [provided by RefSeq, Feb 2012]

Protein Families:

Druggable Genome, Protein Kinase, Transmembrane

Protein Pathways:

Cytokine-cytokine receptor interaction, TGF-beta signaling pathway

Product images:

15% SDS-PAGE (3ug)