

Product datasheet for **AR51922PU-N**

CCBL1 (1-422, His-tag) Human Protein

Product data:

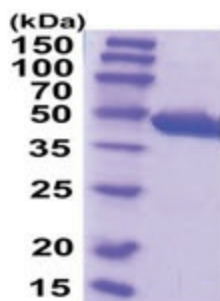
Product Type:	Recombinant Proteins
Description:	CCBL1 (1-422, His-tag) human protein, 0.5 mg
Species:	Human
Expression Host:	E. coli
Expression cDNA Clone or AA Sequence:	MGSSHHHHHH SSGLVPRGSH MGSMKQLQA RRLDGIDYNP WVEFVKLASE HDVWNLGQGF PDFPPPFAV EAFQHAVSGD FMLNQYTKTF GYPPLTKILA SFFGELLGQE IDPLRNLVLT VGGYGALFTA FQALVDEGDE VIIIPEFFDC YEPMTMMAGG RPVVFSLKPG PIQNGELGSS SNWQLDPMEL AGKFTSRTKA LVLNTPNPL GKVFSREELE LVASLCQQHD VVCITDEVYQ WMVYDGHQHI SIASLPGMWE RTLTIGSAGK TFSATGWKVG WVLGPDHIMK HLRTVHQNSV FHCPTQSQA VAESFEREQL LFRQPSSYFV QFPQAMQRCR DHMIRSLQSV GLKPIIPQGS YFLITDISDF KRKMPDLPGA VDEPYDRRFV KWMIKNKGLV AIPVSIFYSV PHQKHFHDHYI RFCFVKDEAT LQAMDEKLRK WKVEL
Tag:	His-tag
Predicted MW:	50.3 kDa
Concentration:	lot specific
Purity:	>90% by SDS - PAGE
Buffer:	Presentation State: Purified State: Liquid purified protein Buffer System: Phosphate buffered saline (pH 7.4) containing 10% glycerol, 1 mM DTT
Preparation:	Liquid purified protein
Storage:	Store undiluted at 2-8°C for one week or (in aliquots) at -20°C to -80°C for longer. Avoid repeated freezing and thawing.
Stability:	Shelf life: one year from despatch.
RefSeq:	NP_001116143
Locus ID:	883
UniProt ID:	Q16773 , A8K563
Cytogenetics:	9q34.11
Synonyms:	CCBL1; GTK; KAT1; KATI



[View online »](#)

Summary:

This gene encodes a cytosolic enzyme that is responsible for the metabolism of cysteine conjugates of certain halogenated alkenes and alkanes. This metabolism can form reactive metabolites leading to nephrotoxicity and neurotoxicity. Increased levels of this enzyme have been linked to schizophrenia. Multiple transcript variants that encode different isoforms have been identified for this gene. [provided by RefSeq, Jul 2008]

Product images:

15% SDS-PAGE (3ug)