

Product datasheet for **AR51915PU-N**

SGCB (Beta-sarcoglycan) (87-318, His-tag) Human Protein

Product data:

Product Type:	Recombinant Proteins
Description:	SGCB (Beta-sarcoglycan) (87-318, His-tag) human recombinant protein, 0.5 mg
Species:	Human
Expression Host:	E. coli
Expression cDNA Clone or AA Sequence:	MGSSHHHHHH SSGLVPRGSH MGSWAVIRIG PNGCDSMEFH ESGLLRFKQV SDMGVIHPLY KSTVGGRRNE NLVITGNNQP IVFQQGTTKL SVENNKTSIT SDIGMQFFDP RTQNILFSTD YETHEFHLPS GVKSLNVQKA STERITSNAT SDLNIKVDGR AIVRGNEGVF IMGKTIEFHM GGNMELKAEN SIILNGSVMV STTRLPSSSS GDQLGSGDWV RYKLCMCADG TLFKVQVTSQ NMGCQISDNP CGNTH
Tag:	His-tag
Predicted MW:	27.8 kDa
Concentration:	lot specific
Purity:	>90% by SDS - PAGE
Buffer:	Presentation State: This purified protein is available in a denatured form, making it less suitable for functional studies. Denatured proteins are better suited for applications like Western Blot (WB) or imaging assays. State: Liquid purified protein Buffer System: Liquid, In 20 mM Tris-HCl buffer (pH 8.0) containing 10% glycerol
Preparation:	Liquid purified protein
Protein Description:	Recombinant human SGCB protein, fused to His-tag at N-terminus, was expressed in E.coli.
Storage:	Store undiluted at 2-8°C for one week or (in aliquots) at -20°C to -80°C for longer. Avoid repeated freezing and thawing.
Stability:	Shelf life: one year from despatch.
RefSeq:	NP_000223
Locus ID:	6443
UniProt ID:	Q16585
Cytogenetics:	4q12
Synonyms:	Beta sarcoglycan, Beta-SG, A3b, 43DAG



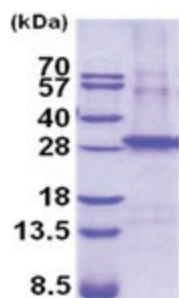
[View online »](#)

Summary: This gene encodes a member of the sarcoglycan family. Sarcoglycans are transmembrane components in the dystrophin-glycoprotein complex which help stabilize the muscle fiber membranes and link the muscle cytoskeleton to the extracellular matrix. Mutations in this gene have been associated with limb-girdle muscular dystrophy.[provided by RefSeq, Oct 2008]

Protein Families: Druggable Genome, Transmembrane

Protein Pathways: Arrhythmogenic right ventricular cardiomyopathy (ARVC), Dilated cardiomyopathy, Hypertrophic cardiomyopathy (HCM), Viral myocarditis

Product images:



15% SDS-PAGE (3ug)