

## Product datasheet for **AR51889PU-N**

### CD132 / IL2RG (23-262, His-tag) Human Protein

#### Product data:

Product Type:	Recombinant Proteins
Description:	CD132 / IL2RG (23-262, His-tag) human recombinant protein, 0.25 mg
Species:	Human
Expression cDNA Clone or AA Sequence:	LNTTILTPNG NEDTTADFFL TTMPDLSLV STLPLPEVQC FVFNVEYMNC TWNSSEPPQ TNLTLHYWYK NSDNDKVQKC SHYLFSEEIT SGCQLQKKEI HLYQTFVWQL QDPREPRRQA TQMLKLQNLV IPWAPENLTL HKLSESQLEL NWNNRFLNHC LEHLVQYRTD WDHSWTEQSV DYRHKFSLPS VDGQKRYTFR VRSRFNPLCG SAQHWSEWSH PIHWGSNTSK ENPFLFALEA <u>HHHHHH</u>
Tag:	His-tag
Predicted MW:	29.0 kDa
Concentration:	lot specific
Purity:	>90% by SDS - PAGE.
Buffer:	Presentation State: Purified State: Liquid purified protein Buffer System: Phosphate buffer saline (pH 7.4).
Endotoxin:	< 1.0 EU per 1 microgram of protein (determined by LAL method)
Preparation:	Liquid purified protein
Protein Description:	Recombinant human IL2RG, fused to His-tag at C-terminus, was expressed in insect cell and purified by using conventional chromatography techniques.
Storage:	Store undiluted at 2-8°C for one week or (in aliquots) at -20°C to -80°C for longer. Avoid repeated freezing and thawing.
Stability:	Shelf life: one year from despatch.
RefSeq:	<a href="#">NP_000197</a>
Locus ID:	3561
UniProt ID:	<a href="#">P31785</a>
Cytogenetics:	Xq13.1
Synonyms:	CD132; CIDX; IL-2RG; IMD4; P64; SCIDX; SCIDX1



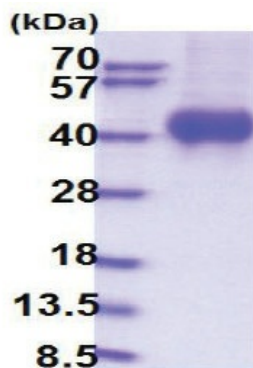
[View online »](#)

**Summary:** The protein encoded by this gene is an important signaling component of many interleukin receptors, including those of interleukin -2, -4, -7 and -21, and is thus referred to as the common gamma chain. Mutations in this gene cause X-linked severe combined immunodeficiency (XSCID), as well as X-linked combined immunodeficiency (XCID), a less severe immunodeficiency disorder. [provided by RefSeq, Mar 2010]

**Protein Families:** Druggable Genome, Transmembrane

**Protein Pathways:** Cytokine-cytokine receptor interaction, Endocytosis, Jak-STAT signaling pathway, Primary immunodeficiency

**Product images:**



15% SDS-PAGE (3ug)