

Product datasheet for **AR51882PU-S**

glpK (1-847, His-tag) Escherichia coli Protein

Product data:

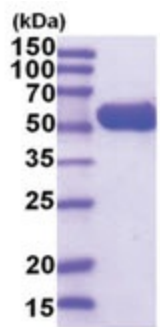
Product Type:	Recombinant Proteins
Description:	glpK (1-847, His-tag) recombinant protein, 0.1 mg
Species:	Escherichia coli
Expression Host:	E. coli
Expression cDNA Clone or AA Sequence:	MGSSHHHHHH SSGLVPRGSH MGSMTTEKKYI VALDQGTSS RAVVMDHDAN IISVSQREFE QIYPKPGWVE HDPMEIWATQ SSTLVEVLAK ADISSDQIAA IGITNQRETT IWWEKETGKP IYNAIVWQCR RTAEICEHLK RDGLEDYIRS NTGLVIDPYF SGTKVKWILD HVEGSRERAR RGELLFGTVD TWLIWKMTQG RVHVTDYTNA SRTMLFNIHT LDWDDKMLEV LDIPREMLPE VRRSSEVYGQ TNIGGKGGTR IPISGIAGDQ QAALFGQLCV KEGMAKNTYG TGCFMLMNTG EKAVKSENGL LTTIACGPTG EVNYALEGAV FMAGASIQWL RDEMKLINDA YDSEYFATKV QNTNGVYVVP AFTGLGAPYW DPYARGAIFG LTRGVNANHI IRATLESIAQ QTRDVLAMQ ADSGIRLHAL RVDGGAVANN FLMQFQSDIL GTRVERPEVR EVTALGAAYL AGLAVGFQWQN LDELQEKAVI EREFRPGIET TERNYRYAGW KKAVKRAMAW EEHDE
Tag:	His-tag
Predicted MW:	58.6 kDa
Concentration:	lot specific
Purity:	>95% by SDS - PAGE
Buffer:	Presentation State: Purified State: Liquid purified protein Buffer System: Liquid, In Phosphate buffered saline (pH 7.4) containing 10% glycerol, 1 mM DTT
Preparation:	Liquid purified protein
Protein Description:	Recombinant E.coli glpK, fused to His-tag at N-terminus, was expressed in E.coli and purified by using conventional chromatography techniques.
Storage:	Store undiluted at 2-8°C for one week or (in aliquots) at -20°C to -80°C for longer. Avoid repeated freezing and thawing.
Stability:	Shelf life: one year from despatch.



[View online »](#)

Summary:

glpK also known as glycerol kinase, belongs to the FGGY kinase family. glpK function to catalyze the transfer of a phosphate group from ATP to glycerol, thereby forming glycerol phosphate. This intermediate can then be converted to dihydroxyacetone phosphate (DHAP), which is utilized in either glycolysis or gluconeogenesis.

Product images:

15% SDS-PAGE (3ug)