

## Product datasheet for **AR51867PU-S**

### CD207 / Langerin (65-328, His-tag) Human Protein

#### Product data:

Product Type:	Recombinant Proteins
Description:	CD207 / Langerin (65-328, His-tag) human recombinant protein, 0.1 mg
Species:	Human
Expression Host:	E. coli
Expression cDNA Clone or AA Sequence:	<u>MGSSHHHHHH</u> <u>SSGLVPRGSH</u> <u>MGSPRFMGTI</u> SDVKTNVQLL KGRVDNISTL DSEIKKNSDG MEAAGVQIQM VNESLGYVRS QFLKLKTSVE KANAQIQILT RSWEEVSTLN AQIPELKSDL EKASALNTKI RALQGSLENM SKLLKRQNDI LQVVSQGWKY FKGNFYFSL IPKTWYSAEQ FCVSRNSHLT SVTSESEQEF LYKTAGGLIY WIGLTKAGME GDWSWVDDTP FNKVQSARFW IPGEPNNAGN NEHCGNIKAP SLQAWNDAPC DKTFLFICKR PYVPSEP
Tag:	His-tag
Predicted MW:	32.2 kDa
Concentration:	lot specific
Purity:	>85% by SDS - PAGE
Buffer:	Presentation State: Purified State: Liquid purified protein Buffer System: 20 mM Tris 8.0 containing 10% glycerol.
Preparation:	Liquid purified protein
Protein Description:	Recombinant human CD207, fused to His-tag at N-terminus, was expressed in E.coli.
Storage:	Store undiluted at 2-8°C for one week or (in aliquots) at -20°C to -80°C for longer. Avoid repeated freezing and thawing.
Stability:	Shelf life: one year from despatch.
RefSeq:	<u>NP_056532</u>
Locus ID:	50489
UniProt ID:	<u>Q9UJ71</u>
Cytogenetics:	2p13.3
Synonyms:	CLEC4K



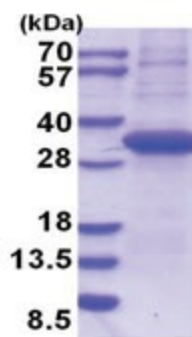
[View online »](#)

**Summary:**

The protein encoded by this gene is expressed only in Langerhans cells which are immature dendritic cells of the epidermis and mucosa. It is localized in the Birbeck granules, organelles present in the cytoplasm of Langerhans cells and consisting of superimposed and zippered membranes. It is a C-type lectin with mannose binding specificity, and it has been proposed that mannose binding by this protein leads to internalization of antigen into Birbeck granules and providing access to a nonclassical antigen-processing pathway. Mutations in this gene result in Birbeck granules deficiency or loss of sugar binding activity. [provided by RefSeq, Aug 2010]

**Protein Families:**

Druggable Genome, Transmembrane

**Product images:**

15% SDS-PAGE (3ug)