

## Product datasheet for **AR51860PU-S**

### Granzyme H (GZMH) (20-246, His-tag) Human Protein

#### Product data:

Product Type:	Recombinant Proteins
Description:	Granzyme H (GZMH) (20-246, His-tag) human recombinant protein, 20 µg
Species:	Human
Expression Host:	E. coli
Expression cDNA Clone or AA Sequence:	MGSSHHHHHH SSGLVPRGSH MEIIGGHEAK PHSRPYMAFV QFLQEKSRRK CGGILVRKDF VLTAHCQGS SINVTLAGAHN IKEQERTQQF IPVKRPIPHP AYNPKNFSND IMLLQLERKA KWTAVRPLR LPSSKAQVKP GQLCSVAGWG YVSMSTLATT LQEVLLTVQK DCQCERLFHG NYSRATEICV GDPKKTQTGF KGDSGGPLVC KDVAQGILSY GNKKGTPPGV YIKVSHFLPW IKRTMKRL
Tag:	His-tag
Predicted MW:	27.5 kDa
Concentration:	lot specific
Purity:	>85% by SDS - PAGE
Buffer:	Presentation State: Purified State: Liquid purified protein Buffer System: 20 mM Tris 8.0 containing 10% glycerol.
Preparation:	Liquid purified protein
Protein Description:	Recombinant human GZMH, fused to His-tag at N-terminus, was expressed in E.coli.
Storage:	Store undiluted at 2-8°C for one week or (in aliquots) at -20°C to -80°C for longer. Avoid repeated freezing and thawing.
Stability:	Shelf life: one year from despatch.
RefSeq:	<a href="#">NP_001257709</a>
Locus ID:	2999
Cytogenetics:	14q12
Synonyms:	CCP-X; CGL-2; CSP-C; CTLA1; CTSSL2



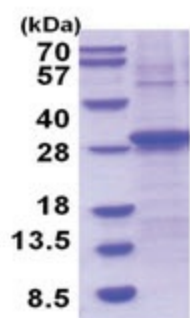
[View online »](#)

**Summary:**

This gene encodes a member of the peptidase S1 family of serine proteases. Alternative splicing results in multiple transcript variants, at least one of which encodes a preproprotein that is proteolytically processed to generate a chymotrypsin-like protease. This protein is reported to be constitutively expressed in the NK (natural killer) cells of the immune system and may play a role in the cytotoxic arm of the innate immune response by inducing target cell death and by directly cleaving substrates in pathogen-infected cells. This gene is present in a gene cluster with another member of the granzyme subfamily on chromosome 14. [provided by RefSeq, Nov 2015]

**Protein Families:**

Druggable Genome, Protease

**Product images:**

15% SDS-PAGE (3ug)