

Product datasheet for **AR51845PU-N**

CLEC4E (41-219, His-tag) Human Protein

Product data:

Product Type:	Recombinant Proteins
Description:	CLEC4E (41-219, His-tag) human recombinant protein, 0.5 mg
Species:	Human
Expression Host:	E. coli
Expression cDNA Clone or AA Sequence:	MGSSHHHHHH SSGLVPRGSH MRCVVTFRIF QTCDEKKFQL PENFTELSY NYGSGSVKNC CPLNWEYFQS SCYFFSTDTI SWALSLKNCS AMGAHLVVIN SQEEQEFLSY KKPCKMREFFI GLSDQWVEGQ WQWVDGTPLT KLSLFDVGE PNNIATLEDC ATMRDSSNPR QNWNDVTCFL NYFRICEMVG INPLNKGKSL
Tag:	His-tag
Predicted MW:	22.9 kDa
Concentration:	lot specific
Purity:	>85% by SDS - PAGE
Buffer:	Presentation State: Purified State: Liquid purified protein Buffer System: 20 mM Tris 8.0 containing 10% glycerol.
Preparation:	Liquid purified protein
Protein Description:	Recombinant human CLEC4E, fused to His-tag at N-terminus, was expressed in E.coli.
Storage:	Store undiluted at 2-8°C for one week or (in aliquots) at -20°C to -80°C for longer. Avoid repeated freezing and thawing.
Stability:	Shelf life: one year from despatch.
RefSeq:	NP_055173
Locus ID:	26253
UniProt ID:	Q9ULY5
Cytogenetics:	12p13.31
Synonyms:	CLECSF9; MINCLE



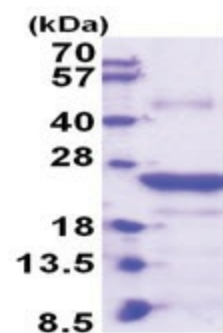
[View online »](#)

Summary:

This gene encodes a member of the C-type lectin/C-type lectin-like domain (CTL/CTLD) superfamily. Members of this family share a common protein fold and have diverse functions, such as cell adhesion, cell-cell signalling, glycoprotein turnover, and roles in inflammation and immune response. The encoded type II transmembrane protein is a downstream target of CCAAT/enhancer binding protein (C/EBP), beta (CEBPB) and may play a role in inflammation. Alternative splice variants have been described but their full-length sequence has not been determined. This gene is closely linked to other CTL/CTLD superfamily members on chromosome 12p13 in the natural killer gene complex region. [provided by RefSeq, Jul 2008]

Protein Families:

Druggable Genome, Transmembrane

Product images:

15% SDS-PAGE (3ug)