

Product datasheet for **AR51843PU-S**

TOM1L2 (1-507, His-tag) Human Protein

Product data:

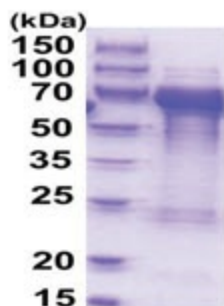
Product Type:	Recombinant Proteins
Description:	TOM1L2 (1-507, His-tag) human protein, 50 µg
Species:	Human
Expression Host:	E. coli
Expression cDNA Clone or AA Sequence:	MGSSHHHHHH SSGLVPRGSH MGSEFMEFLL GNPSTPVGQ CLEKATDGSL QSEDWTLNME ICDIINETEE GPKDAIRALK KRLNGNRNYR EVMLALTVLE TCVKNCGRHF HILVANRDFI DSVLVKIISP KNNPPTIVQD KVLALIQAUA DAFRSSPDLT GVVHIYEELK RKGVEFPMAD LDALSPIHTP QRSVPEVDPA ATMPRSQSQQ RTSAGSYSSP PPAPYSAPQA PALSVTGPIT ANSEQIARLR SELDVRGNT KVMSEMLTEM VPGQEDSSDL ELLQELNRTC RAMQQRIVEL ISRVSNEEVT EELLHVNDL NNVFLRYERF ERYRSGRSVQ NASNGVLNEV TEDNLIDLGP GSPAVVSPMV GNTAPPSSLS SQLAGLDLGT ESVGTLSSL QQCNPDRGFD MFAQTRGNSL AEQRKTVTYE DPQAVGGLAS ALDNRKQSSE GIPVAQPSVM DDIEVWLRTD LKGDDLEEGV TSEEFDKFLE ERAKAAEMVP DLPSPMEAP APASNPSGRK KPERSEDALF AL
Tag:	His-tag
Predicted MW:	58.2 kDa
Concentration:	lot specific
Purity:	>80% by SDS - PAGE
Buffer:	Presentation State: Purified State: Liquid purified protein Buffer System: Phosphate buffered saline (pH 7.4) containing 10% glycerol, 1 mM DTT
Preparation:	Liquid purified protein
Storage:	Store undiluted at 2-8°C for one week or (in aliquots) at -20°C to -80°C for longer. Avoid repeated freezing and thawing.
Stability:	Shelf life: one year from despatch.
RefSeq:	NP_001028723
Locus ID:	146691
UniProt ID:	Q6ZVM7 , Q6ZVM7-2
Cytogenetics:	17p11.2



[View online »](#)

Summary:

This gene belongs to a small gene family whose members have an N-terminal VHS domain followed by a GAT domain; domains which typically participate in vesicular trafficking. The canonical protein encoded by this gene also has a C-terminal clathrin binding motif. This protein has been shown to interact with Tollip, clathrin and ubiquitin and is thought to play a role in endosomal sorting. This gene resides in the 3.7 Mb deletion of chromosome region 17p11.2 that is associated with Smith-Magenis syndrome. Alternative splicing results in multiple transcript variants encoding distinct proteins. [provided by RefSeq, Apr 2017]

Product images:

15% SDS-PAGE (3ug)