

Product datasheet for **AR51830PU-S**

CNTFR (23-342, His-tag) Human Protein

Product data:

| | |
|---------------------------------------|--|
| Product Type: | Recombinant Proteins |
| Description: | CNTFR (23-342, His-tag) human protein, 0.1 mg |
| Species: | Human |
| Expression Host: | E. coli |
| Expression cDNA Clone or AA Sequence: | MGSSHHHHHH SSGLVPRGSH MQRHSPQEAP HVQYERLGSD VTLP CGTANW DAAVTWRVNG TDLPDLLNG SQLVLHGLEL GHSGLYACFH RDSWHLRHQV LLHVGLPPRE PVLSCRSNTY PKGFYCSWHL PTPTYIPNTF NVTVLHGSKI MVCEKDPALK NRCHIRYMHL FSTIKYKVISI SVSNALGHNA TAITFDEFTI VKPDPPENVV ARPVPSNPRR LEVTWQTPST WPDPEFPLK FFLRYRPLIL DQWQHVELSD GTAHTITDAY AGKEYIIQVA AKDNEIGTWS DWSVAAHATP WTEEPRHLTT EAQAAETTS TTSSLAPPPT TKICDPGELG S |
| Tag: | His-tag |
| Predicted MW: | 38.1 kDa |
| Concentration: | lot specific |
| Purity: | >85% by SDS - PAGE |
| Buffer: | Presentation State: Purified State: Liquid purified protein Buffer System: 20 mM Tris-HCl buffer (pH 8.0) containing 10% glycerol. |
| Preparation: | Liquid purified protein |
| Storage: | Store undiluted at 2-8°C for one week or (in aliquots) at -20°C to -80°C for longer. Avoid repeated freezing and thawing. |
| Stability: | Shelf life: one year from despatch. |
| RefSeq: | <u>NP_001193940</u> |
| Locus ID: | 1271 |
| UniProt ID: | <u>P26992</u> |
| Cytogenetics: | 9p13.3 |



[View online »](#)

Summary:

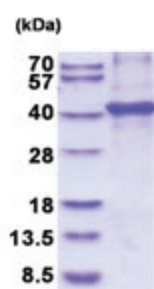
This gene encodes a member of the type 1 cytokine receptor family. The encoded protein is the ligand-specific component of a tripartite receptor for ciliary neurotrophic factor, which plays a critical role in neuronal cell survival, differentiation and gene expression. Binding of ciliary neurotrophic factor to the encoded protein recruits the transmembrane components of the receptor, gp130 and leukemia inhibitory factor receptor, facilitating signal transduction. Single nucleotide polymorphisms in this gene may be associated with variations in muscle strength, as well as early onset of eating disorders. Alternatively spliced transcript variants have been observed for this gene. [provided by RefSeq, May 2011]

Protein Families:

Druggable Genome

Protein Pathways:

Cytokine-cytokine receptor interaction, Jak-STAT signaling pathway

Product images:

15% SDS-PAGE (3ug)