

Product datasheet for **AR51817PU-N**

TECK / CCL25 (His-tag) Human Protein

Product data:

Product Type:	Recombinant Proteins
Description:	TECK / CCL25 (His-tag) human recombinant protein, 0.5 mg
Species:	Human
Expression Host:	E. coli
Expression cDNA Clone or AA Sequence:	MGSSHHHHHH SSGLVPRGSH MGSHMQGVFE DCCLAYHYPI GWAVLRRAWT YRIQEVSGSC NLPAAI FYLP KRHRKVC GNP KSREVQ RAMK LLDARNKVFA KLHHNTQTFQ AGPHAVKKLS SGNSKLSSSK FSNPISSSKR NVSLLISANS GL
Tag:	His-tag
Predicted MW:	16.8 kDa
Concentration:	lot specific
Purity:	>90% by SDS - PAGE
Buffer:	Presentation State: Purified State: Liquid purified protein Buffer System: 20 mM Tris-HCl buffer (pH 8.0) containing 10% glycerol.
Preparation:	Liquid purified protein
Protein Description:	Recombinant protein shows chemotactic activity on thymocytes, macrophages, THP-1 cells, and dendritic cells but is inactive on peripheral blood lymphocytes and neutrophils. It binds to CCR9. Isoform 2 is an antagonist of isoform1 and binds to atypical chemokine receptor ACKR4 and mediates the recruitment of beta-arrestin (ARRB1/2) to ACKR4. Recombinant human CCL25-iso1, fused to His-tag at N-terminus, was expressed in E.coli .
Storage:	Store undiluted at 2-8°C for one week or (in aliquots) at -20°C to -80°C for longer. Avoid repeated freezing and thawing.
Stability:	Shelf life: one year from despatch.
RefSeq:	NP_001188288
Locus ID:	6370
UniProt ID:	O15444
Cytogenetics:	19p13.2
Synonyms:	Ckb15; Ck beta-15; SCYA25; TECK



[View online »](#)

Summary:

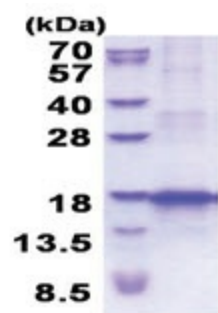
This antimicrobial gene belongs to the subfamily of small cytokine CC genes. Cytokines are a family of secreted proteins involved in immunoregulatory and inflammatory processes. The CC cytokines are proteins characterized by two adjacent cysteines. The cytokine encoded by this gene displays chemotactic activity for dendritic cells, thymocytes, and activated macrophages but is inactive on peripheral blood lymphocytes and neutrophils. The product of this gene binds to chemokine receptor CCR9. Alternative splicing results in multiple transcript variants. [provided by RefSeq, Sep 2014]

Protein Families:

Druggable Genome, Secreted Protein

Protein Pathways:

Chemokine signaling pathway, Cytokine-cytokine receptor interaction

Product images:

15% SDS-PAGE (3ug)