

Product datasheet for **AR51800PU-S**

Peptidase D / PEPD (1-493, His-tag) Human Protein

Product data:

Product Type:	Recombinant Proteins
Description:	Peptidase D / PEPD (1-493, His-tag) human recombinant protein, 0.1 mg
Species:	Human
Expression Host:	E. coli
Expression cDNA Clone or AA Sequence:	MGSSHHHHHH SSGLVPRGSH MGSMAAATGP SFWLGNETLK VPLALFALNR QRLCERLRKN PAVQAGSIVV LQGGEETQRY CTDTGVLFRQ ESFFHWAFGV TEPGCYGVID VDTGKSTLFV PRLPASHATW MGKHSKEHF KEKYAVDDVQ YVDEIASVLT SQKPSVLLTL RGVNTDSGSV CREASFDGIS KFEVNTILH PEIVECRVFK TDMELEVLRY TNKISSEHR EVMKAVKVG M KEYELESLEF HYCYSRGGMR HSSYTCICGS GENSAVLHYG HAGAPNDRTI QNGDMCLFDM GGEYYCFASD ITCSFPANGK FTADQKAVYE AVLRSSRAVM GAMKPGVWWP DMHRLADRIH LEELAHMGIL SGSVDAMVQA HLGAVFMPHG LGHFLGIDVH DVGGYPEGVE RIDEPLRSL RTARHLQPGM VLTVEPGIYF IDHLLDEALA DPARASFLNR EVLQFRFRGFG GVRIEEDVV TDSGIELLTC VPRTVEEIEA CMAGCDKAFT PFSGPK
Tag:	His-tag
Predicted MW:	56.9 kDa
Concentration:	lot specific
Purity:	>90% by SDS - PAGE
Buffer:	Presentation State: Purified State: Liquid purified protein Buffer System: Liquid, In Phosphate buffered saline (pH 7.4) containing 10% glycerol, 1 mM DTT
Preparation:	Liquid purified protein
Protein Description:	Recombinant human PEPD, fused to His-tag at N-terminus, was expressed in E.coli and purified by using conventional chromatography techniques.
Storage:	Store undiluted at 2-8°C for one week or (in aliquots) at -20°C to -80°C for longer. Avoid repeated freezing and thawing.
Stability:	Shelf life: one year from despatch.
RefSeq:	NP_000276
Locus ID:	5184



[View online »](#)

UniProt ID: [P12955](#), [A0A140VJR2](#)

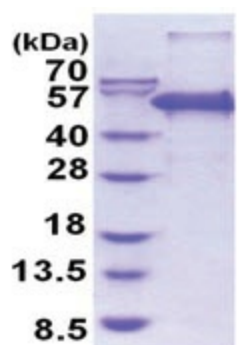
Cytogenetics: 19q13.11

Synonyms: PROLIDASE

Summary: This gene encodes a member of the peptidase family. The protein forms a homodimer that hydrolyzes dipeptides or tripeptides with C-terminal proline or hydroxyproline residues. The enzyme serves an important role in the recycling of proline, and may be rate limiting for the production of collagen. Mutations in this gene result in prolidase deficiency, which is characterized by the excretion of large amount of di- and tri-peptides containing proline. Multiple transcript variants encoding different isoforms have been found for this gene. [provided by RefSeq, Oct 2009]

Protein Families: Druggable Genome, Protease

Product images:



15% SDS-PAGE (3ug)