

Product datasheet for **AR51766PU-N**

CLEC5A (28-188, His-tag) Human Protein

Product data:

Product Type:	Recombinant Proteins
Description:	CLEC5A (28-188, His-tag) human recombinant protein, 0.25 mg
Species:	Human
Expression Host:	E. coli
Expression cDNA Clone or AA Sequence:	MGSSHHHHHH SSGLVPRGSH MGSPQIFNKS NDGFTTTRSY GTVSQIFGSS SPSPNGFITT RSYGTVC PKD WEFYQARCFE LSTSESSWNE SRDFCKGKGS TLAIVNTPEK LKFLQDITDA EKYFIGLIYH REEKRWWIN NSVFNGNVTN QNQNFNCATI GLTKTFDAAS CDISYRRICE KNAK
Tag:	His-tag
Predicted MW:	20.8 kDa
Concentration:	lot specific
Purity:	>80% by SDS - PAGE
Buffer:	Presentation State: Purified State: Liquid purified protein Buffer System: 20 mM Tris-HCl buffer (pH 8.0) containing 10% glycerol
Preparation:	Liquid purified protein
Protein Description:	Recombinant human CLEC5A protein, fused to His-tag at N-terminus, was expressed in E.coli.
Storage:	Store undiluted at 2-8°C for one week or (in aliquots) at -20°C to -80°C for longer. Avoid repeated freezing and thawing.
Stability:	Shelf life: one year from despatch.
RefSeq:	NP_001288096
Locus ID:	23601
UniProt ID:	Q14DL9
Cytogenetics:	7q34
Synonyms:	CLECSF5; MDL-1; MDL1



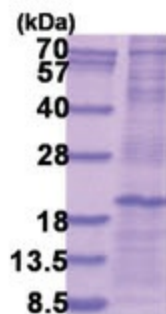
[View online »](#)

Summary:

This gene encodes a member of the C-type lectin/C-type lectin-like domain (CTL/CTLD) superfamily. Members of this family share a common protein fold and have diverse functions, such as cell adhesion, cell-cell signalling, glycoprotein turnover, and roles in inflammation and immune response. The encoded type II transmembrane protein interacts with dnax-activation protein 12 and may play a role in cell activation. Alternative splice variants have been described but their full-length sequence has not been determined. [provided by RefSeq, Jul 2008]

Protein Families:

Druggable Genome, Transmembrane

Product images:

15% SDS-PAGE (3ug)