

Product datasheet for **AR51763PU-S**

THOC7 (1-204, His-tag) Human Protein

Product data:

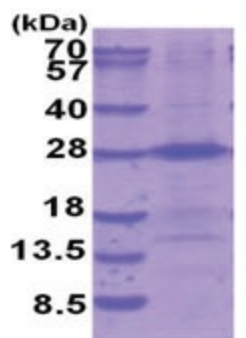
Product Type:	Recombinant Proteins
Description:	THOC7 (1-204, His-tag) human recombinant protein, 50 µg
Species:	Human
Expression Host:	E. coli
Expression cDNA Clone or AA Sequence:	MGSSHHHHHH SSGLVPRGSH MGSMGAVTDD EVIRKRLIID GDGAGDDRRI NLLVKSFIKW CNSGSQEEGY SQYQRMLSTL SQCEFSMGKT LLVYDMNLRE MENYEKIYKE IECSIAGAHE KIAECKKQIL QAKRIRKNRQ EYDALAKVIQ HHPDRHETLK ELEALGKELE HLSHIKESVE DKLELRRKQF HVLLSTIHEL QQTLENDEKL SEVEEAQEAS METDPKP
Tag:	His-tag
Predicted MW:	26.1 kDa
Concentration:	lot specific
Purity:	>90% by SDS - PAGE
Buffer:	Presentation State: Purified State: Liquid purified protein Buffer System: Phosphate buffered saline (pH 7.4) containing, 50% glycerol, 1 mM DTT
Preparation:	Liquid purified protein
Protein Description:	Recombinant human THOC7 protein, fused to His-tag at N-terminus, was expressed in E.coli and purified by using conventional chromatography techniques.
Storage:	Store undiluted at 2-8°C for one week or (in aliquots) at -20°C to -80°C for longer. Avoid repeated freezing and thawing.
Stability:	Shelf life: one year from despatch.
RefSeq:	NP_001272316
Locus ID:	80145
UniProt ID:	A0A5S6STF9
Cytogenetics:	3p14.1
Synonyms:	fSAP24; hTREX30; NIF3L1BP1



[View online »](#)

Summary:

Required for efficient export of polyadenylated RNA. Acts as component of the THO subcomplex of the TREX complex which is thought to couple mRNA transcription, processing and nuclear export, and which specifically associates with spliced mRNA and not with unspliced pre-mRNA. TREX is recruited to spliced mRNAs by a transcription-independent mechanism, binds to mRNA upstream of the exon-junction complex (EJC) and is recruited in a splicing- and cap-dependent manner to a region near the 5' end of the mRNA where it functions in mRNA export to the cytoplasm via the TAP/NFX1 pathway.[UniProtKB/Swiss-Prot Function]

Product images:

15% SDS-PAGE (3ug)