

## Product datasheet for **AR51759PU-S**

### WNT3A (19-352) Human Protein

#### Product data:

Product Type:	Recombinant Proteins
Description:	WNT3A (19-352) human recombinant protein, 0.1 mg
Species:	Human
Expression Host:	E. coli
Expression cDNA Clone or AA Sequence:	MSYPIWWSLA VGPQYSSLGS QPILCASIPG LVPKQLRFCR NYVEIMPSVA EGIKIGIQEC QHQFRGRRWN CTTVHDSLAI FGPVLDKATR ESAFVHAIAS AGVAFVTRTS CAEGTAAICG CSSRHQGGSPG KGWKWGGCSE DIEFGGMVSR EFADARENRP DARSAMNRHN NEAGRQAIAS HMHLKCKCHG LSGSCEVKTC WWSQPDFRAI GDFLKDKYDS ASEMVEKHR ESRGWVETLR PRYTYFKVPT ERDLVYYEAS PNFCEPNPET GSFGTRDRTC NVSSHGIDGC DLLCCGRGHN ARAERRREKC RCVFHWCCYV SCQECTRVYD VHTCK
Predicted MW:	37.5 kDa
Concentration:	lot specific
Purity:	>85% by SDS - PAGE
Buffer:	Presentation State: This purified protein is available in a denatured form, making it less suitable for functional studies. Denatured proteins are better suited for applications like Western Blot (WB) or imaging assays. State: Liquid purified protein Buffer System: 20 mM Tris-HCl buffer (pH 8.0) containing 10% glycerol.
Preparation:	Liquid purified protein
Protein Description:	Recombinant human WNT3a protein was expressed in E.coli.
Storage:	Store undiluted at 2-8°C for one week or (in aliquots) at -20°C to -80°C for longer. Avoid repeated freezing and thawing.
Stability:	Shelf life: one year from despatch.
RefSeq:	<a href="#">NP_149122</a>
Locus ID:	89780
UniProt ID:	<a href="#">P56704</a>
Cytogenetics:	1q42.13
Synonyms:	Protein Wnt-3a



[View online »](#)

**Summary:**

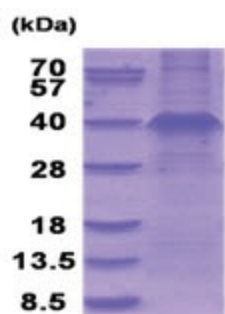
The WNT gene family consists of structurally related genes which encode secreted signaling proteins. These proteins have been implicated in oncogenesis and in several developmental processes, including regulation of cell fate and patterning during embryogenesis. This gene is a member of the WNT gene family. It encodes a protein which shows 96% amino acid identity to mouse Wnt3A protein, and 84% to human WNT3 protein, another WNT gene product. This gene is clustered with WNT14 gene, another family member, in chromosome 1q42 region. [provided by RefSeq, Jul 2008]

**Protein Families:**

Adult stem cells, Cancer stem cells, Druggable Genome, ES Cell Differentiation/IPS, Induced pluripotent stem cells, Secreted Protein, Stem cell relevant signaling - Wnt Signaling pathway

**Protein Pathways:**

Basal cell carcinoma, Hedgehog signaling pathway, Melanogenesis, Pathways in cancer, Wnt signaling pathway

**Product images:**

15% SDS-PAGE (3ug)