

Product datasheet for **AR51756PU-S**

MRPS28 (72-187, His-tag) Human Protein

Product data:

Product Type:	Recombinant Proteins
Description:	MRPS28 (72-187, His-tag) human recombinant protein, 0.1 mg
Species:	Human
Expression Host:	E. coli
Expression cDNA Clone or AA Sequence:	MGSSHHHHHH SSGLVPRGSH MGSGSPKNVE SFASMLRHSP LTQMGPADK LVIGRIFHIV ENDLYIDFGG KFHCVCRRPE VDGEKYQKGT RVRLRLDLE LTSRFLGATT DTTVLEANAV LLGIQESKDS RSKEEHHEK
Tag:	His-tag
Predicted MW:	15.5 kDa
Concentration:	lot specific
Purity:	>90% by SDS - PAGE
Buffer:	Presentation State: Purified State: Liquid purified protein Buffer System: 20 mM Phosphate buffer saline (pH 8.0) containing 20% glycerol, 1 mM DTT
Preparation:	Liquid purified protein
Protein Description:	Recombinant human MRPS28 protein, fused to His-tag at N-terminus, was expressed in E.coli and purified by using conventional chromatography techniques.
Storage:	Store undiluted at 2-8°C for one week or (in aliquots) at -20°C to -80°C for longer. Avoid repeated freezing and thawing.
Stability:	Shelf life: one year from despatch.
RefSeq:	NP_054737
Locus ID:	28957
UniProt ID:	Q9Y2Q9 , A0A0S2Z563
Cytogenetics:	8q21.13
Synonyms:	COXPD47; HSPC007; MRP-S28; MRP-S35; MRPS35



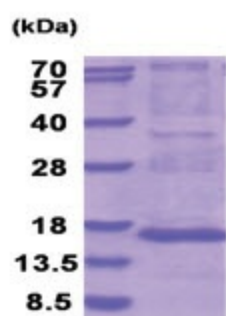
[View online »](#)

Summary:

Mammalian mitochondrial ribosomal proteins are encoded by nuclear genes and help in protein synthesis within the mitochondrion. Mitochondrial ribosomes (mitoribosomes) consist of a small 28S subunit and a large 39S subunit. They have an estimated 75% protein to rRNA composition compared to prokaryotic ribosomes, where this ratio is reversed. Another difference between mammalian mitoribosomes and prokaryotic ribosomes is that the latter contain a 5S rRNA. Among different species, the proteins comprising the mitoribosome differ greatly in sequence, and sometimes in biochemical properties, which prevents easy recognition by sequence homology. This gene encodes a 28S subunit protein that has been called mitochondrial ribosomal protein S35 in the literature. [provided by RefSeq, Jul 2008]

Protein Families:

Druggable Genome

Product images:

15% SDS-PAGE (3ug)