

Product datasheet for **AR51755PU-S**

MTHFSD (1-383, His-tag) Human Protein

Product data:

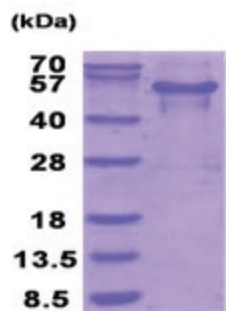
Product Type:	Recombinant Proteins
Description:	MTHFSD (1-383, His-tag) human recombinant protein, 0.1 mg
Species:	Human
Expression Host:	E. coli
Expression cDNA Clone or AA Sequence:	MGSSHHHHHH SSGLVPRGSH MGSMEPRAVG VSKQDIREQI WGYMESQNL ADFPRPVHHRI PNFKGASHAA EQLPRLQAFK TARTIKVNP DAPQKSARFFV LESKKTLLVP TPLRLTGLFN KITPPPGATK DILRKCATSQ GVRNYSVPIG LDSRVLVDLV VVGSVAVSEK GWRIGKGEY ADLEYAMMVS MGAVSKETPV VTIVHDCQV DIPEELVEEH DITVDYILTP TRVIATGCKR PKPMGITWFK ISLEMMEKIP ILRSLRAREQ QAGKDVTLQG EHQHLPEPGC QQTVPLSVGR RPPDTPGPET NSMEAAPGSP PGEGAPLAAD VYVGNLPGDA RVSDLKRALR ELGSVPLRLT WQGP RRRAFL HYPDSAAAQQ AVSCLQGLRL GTDTRLVALA RQQRDK
Tag:	His-tag
Predicted MW:	44.5 kDa
Concentration:	lot specific
Purity:	>90% by SDS - PAGE
Buffer:	Presentation State: Purified State: Liquid purified protein Buffer System: 20 mM Phosphate buffer saline (pH 8.0) containing 30% glycerol, 1 mM DTT
Preparation:	Liquid purified protein
Protein Description:	Recombinant human MTHFSD protein, fused to His-tag at N-terminus, was expressed in E.coli and purified by using conventional chromatography techniques.
Storage:	Store undiluted at 2-8°C for one week or (in aliquots) at -20°C to -80°C for longer. Avoid repeated freezing and thawing.
Stability:	Shelf life: one year from despatch.
RefSeq:	NP_001152849
Locus ID:	64779
UniProt ID:	Q2M296 , B4DN17
Cytogenetics:	16q24.1



[View online »](#)

Summary: MTHFSD contains 1 RRM (RNA recognition motif) domain.

Product images:



15% SDS-PAGE (3ug)