

## Product datasheet for **AR51730PU-S**

### PLA2G7 (47-441, His-tag) Human Protein

#### Product data:

Product Type:	Recombinant Proteins
Description:	PLA2G7 (47-441, His-tag) human recombinant protein, 50 µg
Species:	Human
Expression Host:	E. coli
Expression cDNA Clone or AA Sequence:	MGSSHHHHHH SSGLVPRGSH MGSAAASFGQ TKIPRGNGPY SVGCTDLMFD HTNKGTFRLR YPSQDNDRL DTLWIPNKEY FWGLSKFLGT HWLMGNILRL LFGSMTPAN WNSPLRPGEK YPLVVFHSHGL GAFRTLYSAL GIDLASHGFI VAAVEHRDRS ASATYFKDQ SAAEIGDKSW LYLRTLKQEE ETHIRNEQVR QRAKECSQAL SLILDIDHGK PVKNALDLKF DMEQLKDSID REKIAVIGHS FGGATVIQTL SEDQRFRCGI ALDAWMFPLG DEVYSRIPQP LFFINSEYFQ YPANIIMKKK CYSPOKERM ITIRGSVHQN FADFTFATGK IIGHMLKLG DIDSNVAIDL SNKASLAFQ KHLGLHKDFD QWDCLIEGDD ENLIPGTNIN TTNQHIMLQN SSGIEKYN
Tag:	His-tag
Predicted MW:	47.2 kDa
Concentration:	lot specific
Purity:	>85% by SDS - PAGE
Buffer:	Presentation State: Purified State: Liquid purified protein Buffer System: Phosphate Buffered Saline (pH 7.4) containing 10% glycerol,
Preparation:	Liquid purified protein
Protein Description:	Recombinant human PLA2G7 protein, fused to His-tag at N-terminus, was expressed in E.coli and purified by using conventional chromatography.
Storage:	Store undiluted at 2-8°C for one week or (in aliquots) at -20°C to -80°C for longer. Avoid repeated freezing and thawing.
Stability:	Shelf life: one year from despatch.
RefSeq:	<a href="#">NP_001161829</a>
Locus ID:	7941
UniProt ID:	<a href="#">Q13093</a>
Cytogenetics:	6p12.3



[View online »](#)

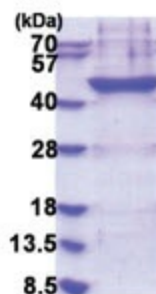
**Synonyms:** LDL-PLA2; LP-PLA2; PAFAD; PAFAH

**Summary:** The protein encoded by this gene is a secreted enzyme that catalyzes the degradation of platelet-activating factor to biologically inactive products. Defects in this gene are a cause of platelet-activating factor acetylhydrolase deficiency. Two transcript variants encoding the same protein have been found for this gene.[provided by RefSeq, Dec 2009]

**Protein Families:** Druggable Genome, Secreted Protein

**Protein Pathways:** Ether lipid metabolism, Metabolic pathways

**Product images:**



15% SDS-PAGE (3ug)