

## Product datasheet for **AR51725PU-N**

### CD58 / LFA3 (29-215, His-tag) Human Protein

#### Product data:

|                                       |   |
|---------------------------------------|---|
| Product Type:                         | Recombinant Proteins  |
| Description:                          | CD58 / LFA3 (29-215, His-tag) human recombinant protein, 0.5 mg   |
| Species:                              | Human   |
| Expression Host:                      | E. coli   |
| Expression cDNA Clone or AA Sequence: | MGSSHHHHHH SSGLVPRGSH MGSFSQQIYG VYGNVTFHV PSNVPLKEVL WKKQKDKVAE<br>LENSEFRAFS SFKNRVYLDT VSGSLTIYNL TSSDEDEYEM ESPNITDTMK FFLYVLESLP SPTLTALTN<br>GSIEVQCMIP EHYNSHRGLI MYSWDCPMEQ CKRNSTSIYF KMENDLPQKI QCTLSNPLFN<br>TTSSIILTTC IPSSGHSRHR |
| Tag:                                  | His-tag   |
| Predicted MW:                         | 23.8 kDa  |
| Concentration:                        | lot specific  |
| Purity:                               | >90% by SDS - PAGE  |
| Buffer:                               | Presentation State: Purified<br>State: Liquid purified protein<br>Buffer System: 20 mM Phosphate buffer containing 10% glycerol.  |
| Preparation:                          | Liquid purified protein   |
| Protein Description:                  | Recombinant human CD58 protein, fused to His-tag at N-terminus, was expressed in E.coli.  |
| Storage:                              | Store undiluted at 2-8°C for one week or (in aliquots) at -20°C to -80°C for longer. Avoid repeated freezing and thawing.   |
| Stability:                            | Shelf life: one year from despatch.   |
| RefSeq:                               | <a href="#">NP_001138294</a>  |
| Locus ID:                             | 965   |
| UniProt ID:                           | <a href="#">P19256</a> , <a href="#">P19256-3</a>   |
| Cytogenetics:                         | 1p13.1  |
| Synonyms:                             | ag3; LFA-3; LFA3  |



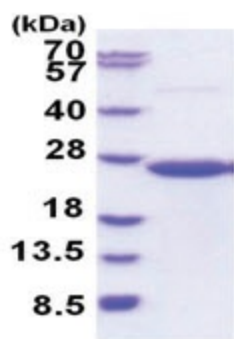
[View online »](#)

**Summary:** This gene encodes a member of the immunoglobulin superfamily. The encoded protein is a ligand of the T lymphocyte CD2 protein, and functions in adhesion and activation of T lymphocytes. The protein is localized to the plasma membrane. Alternatively spliced transcript variants have been described. [provided by RefSeq, Jan 2009]

**Protein Families:** Druggable Genome, Transmembrane

**Protein Pathways:** Cell adhesion molecules (CAMs)

**Product images:**



15% SDS-PAGE (3ug)