

## Product datasheet for **AR51709PU-S**

### L-asparaginase (1-308, His-tag) Human Protein

#### Product data:

Product Type:	Recombinant Proteins
Description:	L-asparaginase (1-308, His-tag) human recombinant protein, 50 µg
Species:	Human
Expression Host:	E. coli
Expression cDNA Clone or AA Sequence:	MGSSHHHHHH SSGLVPRGSH MGSMNPIVW HGGGAGPISK DRKERVHQGM VRAATVGYGI LREGGSAVDA VEGAVVALED DPEFNAGCGS VLNTNGEVEM DASIMDGKDL SAGAVSAVQC IANPIKLARL VMEKTPHCFL TDQGAAQFAA AMGVP EIPGE KLVTERNKKR LEKEKHEKGA QKTDCQKNLG TVGAVALDCK GNVAYATSTG GIVNKMVGRV GDSPCLGAGG YADNDIGAVS TTGHGESILK VNLARLTLFH IEQGKTVEEA ADLSLGYMKS RVKGLGGLIV VSKTGDWVAK WTSTMPWAA AKDGKLFHGI DPDDTTITDL P
Tag:	His-tag
Predicted MW:	34.4 kDa
Concentration:	lot specific
Purity:	>90% by SDS - PAGE
Buffer:	Presentation State: Purified State: Liquid purified protein Buffer System: Phosphate buffer saline (pH 7.4) containing 10% glycerol, 1mM DTT.
Preparation:	Liquid purified protein
Protein Description:	Recombinant human ASRGL1 protein, fused to His-tag at N-terminus, was expressed in E.coli and purified by using conventional chromatography techniques.
Storage:	Store undiluted at 2-8°C for one week or (in aliquots) at -20°C to -80°C for longer. Avoid repeated freezing and thawing.
Stability:	Shelf life: one year from despatch.
RefSeq:	<a href="#">NP_001077395</a>
Locus ID:	80150
UniProt ID:	<a href="#">Q7L266</a> , <a href="#">A0A024R573</a>
Cytogenetics:	11q12.3
Synonyms:	ALP; ALP1; CRASH



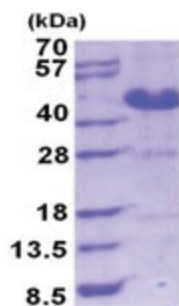
[View online »](#)

**Summary:**

Has both L-asparaginase and beta-aspartyl peptidase activity. May be involved in the production of L-aspartate, which can act as an excitatory neurotransmitter in some brain regions. Is highly active with L-Asp beta-methyl ester. Besides, has catalytic activity toward beta-aspartyl dipeptides and their methyl esters, including beta-L-Asp-L-Phe, beta-L-Asp-L-Phe methyl ester (aspartame), beta-L-Asp-L-Ala, beta-L-Asp-L-Leu and beta-L-Asp-L-Lys. Does not have aspartylglucosaminidase activity and is inactive toward GlcNAc-L-Asn. Likewise, has no activity toward glutamine.[UniProtKB/Swiss-Prot Function]

**Protein Families:**

Protease

**Product images:**

15% SDS-PAGE (3ug)