

Product datasheet for **AR51700PU-S**

MUCL1 / SBEM (21-90, His-tag) Human Protein

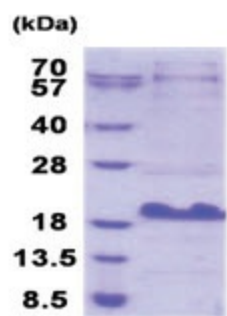
Product data:

Product Type:	Recombinant Proteins
Description:	MUCL1 / SBEM (21-90, His-tag) human recombinant protein, 20 µg
Species:	Human
Expression Host:	E. coli
Expression cDNA Clone or AA Sequence:	MGSSHHHHHH SSGLVPRGSH MGSNPTTAAP ADTYPATGPA DDEAPDAETT AAATTATTAA PTTATTAAST TARKDIPVLP KWVGDLPNGR VCP
Tag:	His-tag
Predicted MW:	9.3 kDa
Concentration:	lot specific
Purity:	>85% by SDS - PAGE
Buffer:	Presentation State: Purified State: Liquid purified protein Buffer System: Phosphate buffer saline (pH 7.4) containing 10% glycerol.
Preparation:	Liquid purified protein
Protein Description:	Recombinant human MUCL1 protein, fused to His-tag at N-terminus, was expressed in E.coli and purified by using conventional chromatography techniques.
Storage:	Store undiluted at 2-8°C for one week or (in aliquots) at -20°C to -80°C for longer. Avoid repeated freezing and thawing.
Stability:	Shelf life: one year from despatch.
RefSeq:	NP_477521
Locus ID:	118430
UniProt ID:	Q96DR8
Cytogenetics:	12q13.2
Synonyms:	SBEM
Summary:	May play a role as marker for the diagnosis of metastatic breast cancer.[UniProtKB/Swiss-Prot Function]
Protein Families:	Secreted Protein



[View online »](#)

Product images:



15% SDS-PAGE (3ug)