

Product datasheet for **AR51699PU-N**

SDHAF1 (1-115, His-tag) Human Protein

Product data:

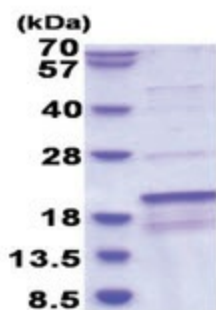
Product Type:	Recombinant Proteins
Description:	SDHAF1 (1-115, His-tag) human recombinant protein, 0.1 mg
Species:	Human
Expression Host:	E. coli
Expression cDNA Clone or AA Sequence:	MGSSHHHHHH SSGLVPRGSH MGSMSRHSRL QRQVLSLYRD LLRAGRKGPG AEARVRAEFR QHAGLPRSDV LRIEYLYRRG RRQLQLLRSG HATAMGAFVR PRAPTGEPPG VGSQPDDGDS PRNPHDSTGA PETRPDGR
Tag:	His-tag
Predicted MW:	15.2 kDa
Concentration:	lot specific
Purity:	>85% by SDS - PAGE
Buffer:	Presentation State: Purified State: Liquid purified protein Buffer System: Phosphate buffered saline (pH 7.4), 30% glycerol, 2 mM DTT, 0.1 mM PMSF
Preparation:	Liquid purified protein
Protein Description:	Recombinant human SDHAF1 protein, fused to His-tag at N-terminus, was expressed in E.coli and purified by using conventional chromatography techniques.
Storage:	Store undiluted at 2-8°C for one week or (in aliquots) at -20°C to -80°C for longer. Avoid repeated freezing and thawing.
Stability:	Shelf life: one year from despatch.
RefSeq:	NP_001036096
Locus ID:	644096
UniProt ID:	A6NFY7
Cytogenetics:	19q13.12
Synonyms:	LYRM8; MC2DN2



[View online »](#)

Summary:

The succinate dehydrogenase (SDH) complex (or complex II) of the mitochondrial respiratory chain is composed of 4 individual subunits. The protein encoded by this gene resides in the mitochondria, and is essential for SDH assembly, but does not physically associate with the complex in vivo. Mutations in this gene are associated with SDH-defective infantile leukoencephalopathy (mitochondrial complex II deficiency).[provided by RefSeq, Mar 2010]

Product images:

15% SDS-PAGE (3 μ g)