

Product datasheet for **AR51696PU-S**

BRD2 (1-455, His-tag) Human Protein

Product data:

Product Type:	Recombinant Proteins
Description:	BRD2 (1-455, His-tag) human recombinant protein, 0.1 mg
Species:	Human
Expression Host:	E. coli
Expression cDNA Clone or AA Sequence:	MGSSHHHHHH SSGLVPRGSH MGSMLQNVTP HNKLPGEGNA GLLGLGPEAA APGKRIRKPS LLYEGFESPT MASVPALQLT PANPPPPEVS NPKKPGRVTN QLQYLHKVVM KALWKHQFAW PFRQPVDVAVK LGLPDYHKII KQPMDMGTIK RRENNYYWA ASECMQDFNT MFTNCYIYNK PTDDIVLMAQ TLEKIFLQKV ASMPQEEQEL VVTIPKNSHK KGAKLAALQG SVTSAHQVPA VSSVSHTALY TPPPEIPTTV LNIPHPSVIS SPLKSLHSA GPPLAVTAA PPAQPLAKKK GVKRKADTTT PTPTAILAPG SPASPPGSLE PKAARLPPMR RESGRPIKPP RKDLPDSQQQ HQSSKKGKLS EQLKHCNGIL KELLKXKHA YAWPFYKPVD ASALGLHDYH DIKHPMDLS TVKRKMENRD YRDAQEFAAD VRLMFSNCYK YNPPDHDVVA MARKLQDVFE FRYAKMPD
Tag:	His-tag
Predicted MW:	52.8 kDa
Concentration:	lot specific
Purity:	>90% by SDS - PAGE
Buffer:	Presentation State: Purified State: Liquid purified protein Buffer System: Phosphate buffered saline (pH 7.4) containing, 10% glycerol, 1 mM DTT
Preparation:	Liquid purified protein
Protein Description:	Recombinant human BRD2 protein, fused to His-tag at N-terminus, was expressed in E.coli.
Storage:	Store undiluted at 2-8°C for one week or (in aliquots) at -20°C to -80°C for longer. Avoid repeated freezing and thawing.
Stability:	Shelf life: one year from despatch.
RefSeq:	NP_001106653
Locus ID:	6046
UniProt ID:	P25440 , A0A024RCR5
Cytogenetics:	6p21.32



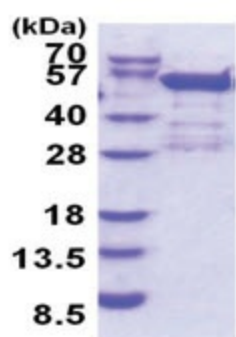
[View online »](#)

Synonyms: BRD2-IT1; D6S113E; FSH; FSRG1; NAT; O27.1.1; RING3; RNF3

Summary: This gene encodes a transcriptional regulator that belongs to the BET (bromodomains and extra terminal domain) family of proteins. This protein associates with transcription complexes and with acetylated chromatin during mitosis, and it selectively binds to the acetylated lysine-12 residue of histone H4 via its two bromodomains. The gene maps to the major histocompatibility complex (MHC) class II region on chromosome 6p21.3, but sequence comparison suggests that the protein is not involved in the immune response. This gene has been implicated in juvenile myoclonic epilepsy, a common form of epilepsy that becomes apparent in adolescence. Multiple alternatively spliced variants have been described for this gene. [provided by RefSeq, Dec 2010]

Protein Families: Protein Kinase

Product images:



15% SDS-PAGE (3ug)