

## Product datasheet for **AR51684PU-N**

### KLHDC8B (1-354, His-tag) Human Protein

#### Product data:

Product Type:	Recombinant Proteins
Description:	KLHDC8B (1-354, His-tag) human recombinant protein, 0.5 mg
Species:	Human
Expression Host:	E. coli
Expression cDNA Clone or AA Sequence:	MGSSHHHHHH SSGLVPRGSH MGSMSAGGGR AFAWQVFPPM PTCRVYGTVA HQDGHLLVLG GCGRAGLPLD TAETLDMASH TWLALAPLPT ARAGAAAVVL GKQVLVGGV DEVQSPVAAV EAFLMDEGRW ERRATLPQAA MG VATVERDG M VYALGGMGP DTAPQAQVRV YEP RRDCWLS LPSMPTPCYG ASTFLHGNKI YVLGGRQGKL PVTAFEAFDL EARTWTRHPS LPSRRAFAGC AMAEGSVFSL GGLQQPGPHN FYSRPHFVNT VEMFDLEHGS WTKLPRSLRM RDKRADFVVG SLGGHIVAIG GLGNQPCPLG SVESFSLARR RWEALPAMPT ARCSCSSLQA GPRLFVIGGV AQGPSQAVEA LCLR DGV
Tag:	His-tag
Predicted MW:	40.1 kDa
Concentration:	lot specific
Purity:	>85% by SDS - PAGE
Buffer:	Presentation State: Purified State: Liquid purified protein Buffer System: Phosphate buffer saline (pH 7.4) containing 10% glycerol
Preparation:	Liquid purified protein
Protein Description:	Recombinant human KLHDC8B protein, fused to His-tag at N-terminus, was expressed in E.coli.
Storage:	Store undiluted at 2-8°C for one week or (in aliquots) at -20°C to -80°C for longer. Avoid repeated freezing and thawing.
Stability:	Shelf life: one year from despatch.
RefSeq:	<a href="#">NP_775817</a>
Locus ID:	200942
UniProt ID:	<a href="#">Q8IXV7</a> , <a href="#">Q96DZ8</a>
Cytogenetics:	3p21.31

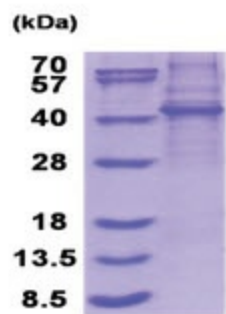


[View online »](#)

Synonyms: CHL

Summary: This gene encodes a protein which forms a distinct beta-propeller protein structure of kelch domains allowing for protein-protein interactions. Mutations in this gene have been associated with Hodgkin lymphoma. [provided by RefSeq, Sep 2010]

### Product images:



15% SDS-PAGE (3ug)