

## Product datasheet for **AR51682PU-S**

### CD300E / CMRF35A5 (18-173, His-tag) Human Protein

#### Product data:

Product Type:	Recombinant Proteins
Description:	CD300E / CMRF35A5 (18-173, His-tag) human recombinant protein, 0.1 mg
Species:	Human
Expression Host:	E. coli
Expression cDNA Clone or AA Sequence:	MGSSHHHHHH SSGLVPRGSH MGSLKGP GS V TG TAGDSLTV WCQYESMYKG YNKYWCRGQY DTSCESIVET KGEEKVERNG RVSIRDHPEA LAFTVTMQNL NEDDAGSYWC KIQTWVVLDS WSRDPSDLVR VYVSPAITTP RRTTHPATPP IFLVNPGRN LSTGEVLTQN SGFRLSSPH
Tag:	His-tag
Predicted MW:	19.9 kDa
Concentration:	lot specific
Purity:	>85 % by SDS - PAGE
Buffer:	Presentation State: This purified protein is available in a denatured form, making it less suitable for functional studies. Denatured proteins are better suited for applications like Western Blot (WB) or imaging assays. State: Liquid purified protein Buffer System: 20 mM Tris-HCl buffer (pH 8.0) containing 10% glycerol, 0.4M Urea
Preparation:	Liquid purified protein
Protein Description:	Recombinant human CD300E protein, fused to His-tag at N-terminus, was expressed in E.coli.
Storage:	Store undiluted at 2-8°C for one week or (in aliquots) at -20°C to -80°C for longer. Avoid repeated freezing and thawing.
Stability:	Shelf life: one year from despatch.
RefSeq:	<a href="#">NP_852114</a>
Locus ID:	342510
UniProt ID:	<a href="#">Q496F6</a> , <a href="#">B4E0V9</a>
Cytogenetics:	17q25.1
Synonyms:	CLM-2, CD300LE, CLM2, IREM2, CMRF35-A5



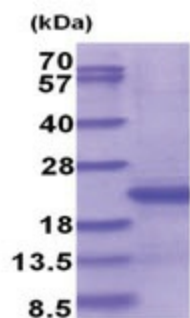
[View online »](#)

**Summary:**

This gene encodes a member of the CD300 glycoprotein family of cell surface proteins expressed on myeloid cells. The protein interacts with the TYRO protein tyrosine kinase-binding protein and is thought to act as an activating receptor. [provided by RefSeq, Nov 2012]

**Protein Families:**

Druggable Genome, Transmembrane

**Product images:**

15% SDS-PAGE (3ug)