

## Product datasheet for **AR51660PU-N**

### CADM1 / SYNCAM (45-374, His-tag) Human Protein

#### Product data:

Product Type:	Recombinant Proteins
Description:	CADM1 / SYNCAM (45-374, His-tag) human recombinant protein, 0.1 mg
Species:	Human
Expression Host:	E. coli
Expression cDNA Clone or AA Sequence:	<u>MGSSHHHHHH</u> <u>SSGLVPRGSH</u> <u>MGSQNLFTKD</u> VTVIEGEVAT ISCQVNKSDS SVIQLLNPNR QTIYFRDFRP LKDSRFQLLN FSSSELKVSL TNVSISDEGR YFCQLYTDPP QESYTTITVL VPPRNLMIDI QKDTAVEGEE IEVNCTAMAS KPATTIRWFK GNTELKKGSE VEEWSDMYTV TSQMLMKVHK EDDGVPVICQ VEHPAVTGNL QTQRYLEVQY KPQVHIQMTY PLQGLTREGD ALELTCEAIG KPQPVMVTWV RVDDEMPQHA VLSGPNLFIN NLNKT DNGTY RCEASNIVGK AHSDYMLVYV DPPTTIPPT TTTTTTTTTT TTILTIITDS RAGEEGSIRA VDH
Tag:	His-tag
Predicted MW:	39.4 kDa
Concentration:	lot specific
Purity:	>85% by SDS - PAGE
Buffer:	Presentation State: Purified State: Liquid purified protein Buffer System: Phosphate buffered saline (pH 7.4) containing 10% glycerol, 1 mM DTT
Preparation:	Liquid purified protein
Protein Description:	Recombinant human CADM1 protein, fused to His-tag at N-terminus, was expressed in E.coli and purified by using conventional chromatography techniques.
Storage:	Store undiluted at 2-8°C for one week or (in aliquots) at -20°C to -80°C for longer. Avoid repeated freezing and thawing.
Stability:	Shelf life: one year from despatch.
RefSeq:	<u>NP_001091987</u>
Locus ID:	23705
UniProt ID:	<u>Q9BY67</u> , <u>Q9BY67-5</u>
Cytogenetics:	11q23.3
Synonyms:	BL2; IGSF4; IGSF4A; Necl-2; NECL2; RA175; sglGSF; ST17; sTSLC-1; SYNCAM; synCAM1; TSLC1



[View online »](#)

**Summary:**

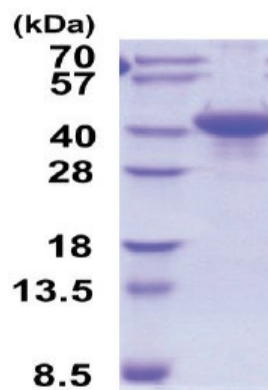
Mediates homophilic cell-cell adhesion in a Ca<sup>2+</sup>-independent manner. Also mediates heterophilic cell-cell adhesion with CADM3 and NECTIN3 in a Ca<sup>2+</sup>-independent manner. Acts as a tumor suppressor in non-small-cell lung cancer (NSCLC) cells. Interaction with CRTAM promotes natural killer (NK) cell cytotoxicity and interferon-gamma (IFN-gamma) secretion by CD8<sup>+</sup> cells in vitro as well as NK cell-mediated rejection of tumors expressing CADM3 in vivo. May contribute to the less invasive phenotypes of lepidic growth tumor cells. In mast cells, may mediate attachment to and promote communication with nerves. CADM1, together with MITF, is essential for development and survival of mast cells in vivo. Acts as a synaptic cell adhesion molecule and plays a role in the formation of dendritic spines and in synapse assembly (By similarity). May be involved in neuronal migration, axon growth, pathfinding, and fasciculation on the axons of differentiating neurons. May play diverse roles in the spermatogenesis including in the adhesion of spermatocytes and spermatids to Sertoli cells and for their normal differentiation into mature spermatozoa.[UniProtKB/Swiss-Prot Function]

**Protein Families:**

Transmembrane

**Protein Pathways:**

Cell adhesion molecules (CAMs)

**Product images:**

15% SDS-PAGE (3ug)