

Product datasheet for **AR51656PU-S**

RPL35 (1-123, His-tag) Human Protein

Product data:

Product Type:	Recombinant Proteins
Description:	RPL35 (1-123, His-tag) human recombinant protein, 20 µg
Species:	Human
Expression Host:	E. coli
Expression cDNA Clone or AA Sequence:	MGSSHHHHHH SSGLVPRGSH MGSMKIKAR DLRGKKKEEL LKQLDDLKVE LSQLRVAKVT GGAASKLSKI RVVRKSIARV LTVINQTQKE NLRKFYKGKK YKPLDLRPPK TRAMRRRLNK HEENLKTKKQ QRKERLYPLR KYAVKA
Tag:	His-tag
Predicted MW:	16.9 kDa
Concentration:	lot specific
Purity:	>80% by SDS - PAGE
Buffer:	Presentation State: Purified State: Liquid purified protein Buffer System: 20 mM Tris-HCl buffer (pH 8.0) containing 10% glycerol.
Preparation:	Liquid purified protein
Protein Description:	Recombinant human RPL35 protein, fused to His-tag at N-terminus, was expressed in E.coli.
Storage:	Store undiluted at 2-8°C for one week or (in aliquots) at -20°C to -80°C for longer. Avoid repeated freezing and thawing.
Stability:	Shelf life: one year from despatch.
RefSeq:	NP_009140
Locus ID:	11224
UniProt ID:	P42766
Cytogenetics:	9q33.3
Synonyms:	DBA19; L35



[View online »](#)

Summary:

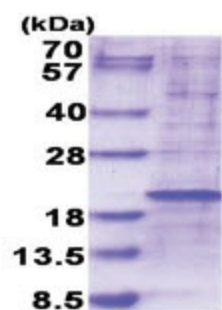
Ribosomes, the organelles that catalyze protein synthesis, consist of a small 40S subunit and a large 60S subunit. Together these subunits are composed of 4 RNA species and approximately 80 structurally distinct proteins. This gene encodes a ribosomal protein that is a component of the 60S subunit. The protein belongs to the L29P family of ribosomal proteins. It is located in the cytoplasm. As is typical for genes encoding ribosomal proteins, there are multiple processed pseudogenes of this gene dispersed through the genome. [provided by RefSeq, Jul 2008]

Protein Families:

Druggable Genome

Protein Pathways:

Ribosome

Product images:

15% SDS-PAGE (3ug)