

Product datasheet for **AR51651PU-S**

Lysyl oxidase (169-417, His-tag) Human Protein

Product data:

Product Type:	Recombinant Proteins
Description:	Lysyl oxidase (169-417, His-tag) human recombinant protein, 0.1 mg
Species:	Human
Expression Host:	E. coli
Expression cDNA Clone or AA Sequence:	MGSSHHHHHH SSGLVPRGSH MGSDDPYNPY KYSDDNPPYN YYDTYERPRP GGRYRPGYGT GYFQYGLPDL VADPYIQAS TYVQKMSMYN LRCAAENCL ASTAYRADVR DYDHRVLLRF PQRVKNQGTS DFLPSRPRYS WEWHSCHQHY HSMDEFSHYD LLDANTQRRV AEGHKASFCL EDTSCDYGYH RRFACHTAHTQ GLSPGCYDTY GADIDCQWID ITDVKPGNYI LKVSVNPSYL VPESDYTNV VRCDIRYTG HAYASGCTIS PY
Tag:	His-tag
Predicted MW:	31.4 kDa
Concentration:	lot specific
Purity:	>85% by SDS - PAGE
Buffer:	Presentation State: Purified State: Liquid purified protein Buffer System: 20 mM Tris-HCl buffer (pH 8.0) containing 10% glycerol.
Preparation:	Liquid purified protein
Protein Description:	Recombinant human LOX protein, fused to His-tag at N-terminus, was expressed in E.coli.
Storage:	Store undiluted at 2-8°C for one week or (in aliquots) at -20°C to -80°C for longer. Avoid repeated freezing and thawing.
Stability:	Shelf life: one year from despatch.
RefSeq:	NP_001171573
Locus ID:	4015
UniProt ID:	B7ZAJ4
Cytogenetics:	5q23.1
Synonyms:	AAT10



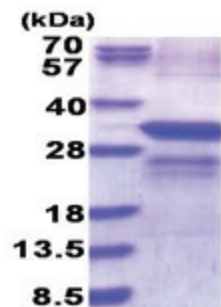
[View online »](#)

Summary:

This gene encodes a member of the lysyl oxidase family of proteins. Alternative splicing results in multiple transcript variants, at least one of which encodes a preproprotein that is proteolytically processed to generate a regulatory propeptide and the mature enzyme. The copper-dependent amine oxidase activity of this enzyme functions in the crosslinking of collagens and elastin, while the propeptide may play a role in tumor suppression. In addition, defects in this gene have been linked with predisposition to thoracic aortic aneurysms and dissections. [provided by RefSeq, Jul 2016]

Protein Families:

Druggable Genome, Secreted Protein

Product images:

15% SDS-PAGE (3ug)