

Product datasheet for **AR51645PU-S**

KLF12 (1-402, His-tag) Human Protein

Product data:

Product Type:	Recombinant Proteins
Description:	KLF12 (1-402, His-tag) human recombinant protein, 0.1 mg
Species:	Human
Expression Host:	E. coli
Expression cDNA Clone or AA Sequence:	MGSSHHHHHH SSGLVPRGSH MGSMNIHMKR KTIKNINTFE NRMLMLDGMP AVRVKTELLE SEQGSPNVHN YPDMEAVPLL LNNVKGEPPE DSLSVDHFQT QTEPVDLSIN KARTSPTAVS SSPVSMTASA SSPSSTSTSS SSSSRLASSP TVITSVSSAS SSSTVLTPGP LVASASGVGG QQFLHIIHPV PPSSPMNLQS NKLSHVHRIP VVVQSVPVVY TAVRSPGNVN NTIVPLLED GRGHGKAQMD PRGLSPRQSK SDSDDDDLPN VTLDSVNETG STALSIARAV QEVHPSPVSR VRGNRMNNQK FPCSISPFISI ESTRRQRSE SPDSRKRRIH RCDFEHCNKV YTKSSHLKAH RRTHTGEKPY KCTWEGCTWK FARSDDELTRH YRKHTGVKPF KCADCDRSFS RSDHLALHRR RHMLV
Tag:	His-tag
Predicted MW:	46.6 kDa
Concentration:	lot specific
Purity:	>85% by SDS - PAGE
Buffer:	Presentation State: Purified State: Liquid purified protein Buffer System: 20 mM Tris-HCl buffer (pH 8.0) containing 10% glycerol 0.4M Urea
Preparation:	Liquid purified protein
Protein Description:	Recombinant human KLF12 protein, fused to His-tag at N-terminus, was expressed in E.coli.
Storage:	Store undiluted at 2-8°C for one week or (in aliquots) at -20°C to -80°C for longer. Avoid repeated freezing and thawing.
Stability:	Shelf life: one year from despatch.
Locus ID:	11278
Cytogenetics:	13q22.1
Synonyms:	AP-2 repressor; AP-2rep; AP-2rep transcription factor; AP2REP; AP2REP, AP-2rep, HSPC122; HSPC122; KLF12 zinc finger transcriptional repressor; Kruppel-like factor 12; OTTHUMP00000018503; OTTHUMP00000040826



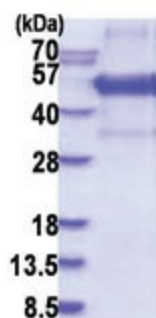
[View online »](#)

Summary:

Activator protein-2 alpha (AP-2 alpha) is a developmentally-regulated transcription factor and important regulator of gene expression during vertebrate development and carcinogenesis. The protein encoded by this gene is a member of the Kruppel-like zinc finger protein family and can repress expression of the AP-2 alpha gene by binding to a specific site in the AP-2 alpha gene promoter. Repression by the encoded protein requires binding with a corepressor, CtBP1. Two transcript variants encoding different isoforms have been found for this gene. [provided by RefSeq, Jul 2008]

Protein Families:

Transcription Factors

Product images:

15% SDS-PAGE (3ug)