

Product datasheet for **AR51639PU-N**

IL1F5 / IL1L1 (1-155, His-tag) Human Protein

Product data:

Product Type:	Recombinant Proteins
Description:	IL1F5 / IL1L1 (1-155, His-tag) human recombinant protein, 0.5 mg
Species:	Human
Expression Host:	E. coli
Expression cDNA Clone or AA Sequence:	MGSSHHHHHH SSGLVPRGSH MVLSGALCFR MKDSALKVLY LHNNQLLAGG LHAGKVIKGE EISVVPNRWL DASLSPVILG VQGGSQLSC GVGQEPTLTL EPVNIMELYL GAKESKSFTF YRRDMGLTSS FESAAYPGWF LCTVPEADQP VRLTQLPENG GWNAPITDFY FQQCD
Tag:	His-tag
Predicted MW:	19.1 kDa
Concentration:	lot specific
Purity:	>95% by SDS - PAGE
Buffer:	Presentation State: Purified State: Liquid purified protein Buffer System: Phosphate buffered saline (pH 7.4), 10% glycerol
Preparation:	Liquid purified protein
Protein Description:	Recombinant human IL36RN protein, fused to His-tag at N-terminus, was expressed in E.coli and purified by using conventional chromatography techniques.
Storage:	Store undiluted at 2-8°C for one week or (in aliquots) at -20°C to -80°C for longer. Avoid repeated freezing and thawing.
Stability:	Shelf life: one year from despatch.
RefSeq:	NP_036407
Locus ID:	26525
UniProt ID:	Q9UBH0 , A0A024R518
Cytogenetics:	2q14.1
Synonyms:	FIL1; FIL1(DELTA); FIL1D; IL-36Ra; IL1F5; IL1HY1; IL1L1; IL1RP3; IL36RA; PSORP; PSORS14



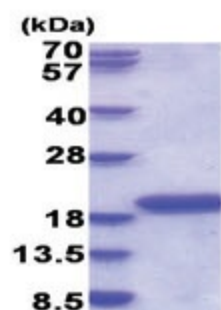
[View online »](#)

Summary:

The protein encoded by this gene is a member of the interleukin 1 cytokine family. This cytokine was shown to specifically inhibit the activation of NF-kappaB induced by interleukin 1 family, member 6 (IL1F6). This gene and eight other interleukin 1 family genes form a cytokine gene cluster on chromosome 2. Two alternatively spliced transcript variants encoding the same protein have been reported. [provided by RefSeq, Jul 2008]

Protein Families:

Druggable Genome, Secreted Protein

Product images:

15% SDS-PAGE (3ug)