

## Product datasheet for **AR51615PU-N**

### CD39L2 / ENTPD6 (His-tag) Human Protein

#### Product data:

Product Type:	Recombinant Proteins
Description:	CD39L2 / ENTPD6 (His-tag) human recombinant protein, 0.5 mg
Species:	Human
Expression Host:	E. coli
Expression cDNA Clone or AA Sequence:	MGSSHHHHHH SSGLVPRGSH MGSKWHRATA TQAFFSITRA APGARWGQQA HSPLGTAADG HEVFGIMFD AGSTGTRVHV FQFTRPPRET PTLTHETFKA LKPGLSAYAD DVEKSAQGIR ELLDVAKQDI PFDFWKATPL VLKATAGLRL LPGEKAQKLL QKVKEVFKAS PFLVGDDCVS IMNGTDEGVS AWITINFLTG SLKTPGGSSV GMLDLGGGST QIAFLPRVEG TLQASPPGYL TALRMFNRTY KLYSYSYLGL GLMSARLAIL GGVEGQPAKD GKELVSPCLS PSFKGEWEHA EVTyrVSGQK AAASLHELCA ARVSEVLQNR VHRTEEVKHV DFYAfSYYYD LAAGVGLIDA EKGGSLVVD FEIAAKYVCR TLETQPQSSP FSCMDLTYVS LLLQEFGFPR SKVLKLTRKI DNVETSWALG AIFHYIDSLN RQKSPAS
Tag:	His-tag
Predicted MW:	48.7 kDa
Concentration:	lot specific
Purity:	>80% by SDS - PAGE
Buffer:	Presentation State: Purified State: Liquid purified protein Buffer System: 20 mM Tris-HCl buffer (pH 8.0) containing 10% glycerol, 0.4M Urea
Preparation:	Liquid purified protein
Protein Description:	Recombinant human ENTPD6 protein, fused to His-tag at N-terminus, was expressed in E.coli.
Storage:	Store undiluted at 2-8°C for one week or (in aliquots) at -20°C to -80°C for longer. Avoid repeated freezing and thawing.
Stability:	Shelf life: one year from despatch.
RefSeq:	<a href="#">NP_001107561</a>
Locus ID:	955
UniProt ID:	<a href="#">O75354</a>
Cytogenetics:	20p11.21



[View online »](#)

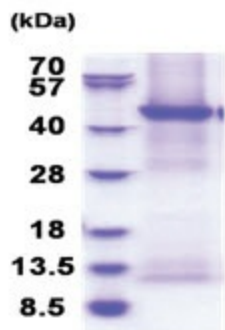
**Synonyms:** CD39L2; dj738P15.3; IL-6SAG; IL6ST2; NTPDase-6

**Summary:** ENTPD6 is similar to E-type nucleotidases (NTPases). NTPases, such as CD39, mediate catabolism of extracellular nucleotides. ENTPD6 contains 4 apyrase-conserved regions which are characteristic of NTPases. Alternative splicing results in multiple transcript variants encoding different isoforms. [provided by RefSeq, Dec 2015]

**Protein Families:** Secreted Protein, Transmembrane

**Protein Pathways:** Purine metabolism, Pyrimidine metabolism

**Product images:**



15% SDS-PAGE (3ug)