

Product datasheet for **AR51510PU-S**

Casein kinase I delta (1-409, His-tag) Human Protein

Product data:

Product Type:	Recombinant Proteins
Description:	Casein kinase I delta (1-409, His-tag) human recombinant protein, 0.1 mg
Species:	Human
Expression Host:	E. coli
Expression cDNA Clone or AA Sequence:	MGSSHHHHHH SSGLVPRGSH MELRVGNRYR LGRKIGSGSF GDIYLGTDIA AGEEVAIKLE CVKTKHPQLH IESKIYKMMQ GGVGIPTIRW CGAEGDYNVM VMELLGPSLE DLFNFCSRKF SLKTVLLAD QMISRIEYIH SKNFIHRDVK PDNFLMGLGK KGNLVYIIDF GLAKKYRDAR THQHIPPYREN KNLTGTARYA SINTHLGIEQ SRRDDLES LG YVLMYFNLGS LPWQGLKAAT KRQKYERISE KKMSTPIEVL CKGYPSEFAT YLNFCRSLRF DDKPDYSYLR QLFNLFHRQ GFSYDYVFDW NMLKFGASRA ADDAERERRD REERLRHSRN PATRGLPSTA SGRLRGTEQV APPTPLTPTS HTANTSPRPV SGMERERKVS MRLHRGAPVN ISSSDLTGRQ DTSRMSTSQN SIPFEHHGK
Tag:	His-tag
Predicted MW:	48.9 kDa
Concentration:	lot specific
Purity:	>85% by SDS - PAGE
Buffer:	Presentation State: Purified State: Liquid purified protein Buffer System: 20 mM Tris-HCl buffer (pH 8.0) containing 10% glycerol, 0.4 M Urea
Preparation:	Liquid purified protein
Protein Description:	Recombinant human CSNK1D protein, fused to His-tag at N-terminus, was expressed in E.coli.
Storage:	Store undiluted at 2-8°C for one week or (in aliquots) at -20°C to -80°C for longer. Avoid repeated freezing and thawing.
Stability:	Shelf life: one year from despatch.
RefSeq:	NP_001884
Locus ID:	1453
UniProt ID:	P48730
Cytogenetics:	17q25.3
Synonyms:	ASPS; CKI-delta; CKId; CKIdelta; FASPS2; HCKID



[View online »](#)

Summary:

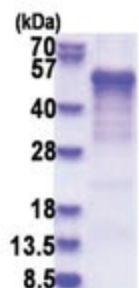
This gene is a member of the casein kinase I (CKI) gene family whose members have been implicated in the control of cytoplasmic and nuclear processes, including DNA replication and repair. The encoded protein may also be involved in the regulation of apoptosis, circadian rhythm, microtubule dynamics, chromosome segregation, and p53-mediated effects on growth. The encoded protein is highly similar to the mouse and rat CK1 delta homologs. Three transcript variants encoding different isoforms have been found for this gene. [provided by RefSeq, Feb 2014]

Protein Families:

Druggable Genome, Protein Kinase

Protein Pathways:

Circadian rhythm - mammal, Gap junction, Hedgehog signaling pathway

Product images:

15% SDS-PAGE (3ug)