

Product datasheet for **AR51503PU-N**

HLA class II DO beta / HLA-DOB (27-224, His-tag) Human Protein

Product data:

Product Type:	Recombinant Proteins
Description:	HLA class II DO beta / HLA-DOB (27-224, His-tag) human recombinant protein, 0.5 mg
Species:	Human
Expression Host:	E. coli
Expression cDNA Clone or AA Sequence:	MGSSHHHHHH SSGLVPRGSH MGS GTDSPED FVIQAKADCY FTNGTEKVQF VRFIFNLEE YVRFDSVDGM FVALTKLGQP DAEQWNSRLD LLERSRQAVD GVCRHNYRLG APFTVGRKVQ PEVTYPERT PLLHQHLLH CSVTGFYPGD IKIKWFLNGQ EERAGVMSTG PIRNGDWTFQ TVVMLEMTPE LGHVYTCLVD HSSLLSPVSV EWRAQSEYSW RK
Tag:	His-tag
Predicted MW:	25.2 kDa
Concentration:	lot specific
Purity:	>95% by SDS - PAGE
Buffer:	Presentation State: Purified State: Liquid purified protein Buffer System: 20 mM Tris-HCl buffer (pH 8.0) containing 0.4M Urea, 10% glycerol
Preparation:	Liquid purified protein
Protein Description:	Recombinant human HLA-DOB protein, fused to His-tag at N-terminus, was expressed in E.coli.
Storage:	Store undiluted at 2-8°C for one week or (in aliquots) at -20°C to -80°C for longer. Avoid repeated freezing and thawing.
Stability:	Shelf life: one year from despatch.
RefSeq:	NP_002111
Locus ID:	3112
UniProt ID:	P13765 , Q5QNS2
Cytogenetics:	6p21.32
Synonyms:	DOB; HLA_DOB



[View online »](#)

Summary:

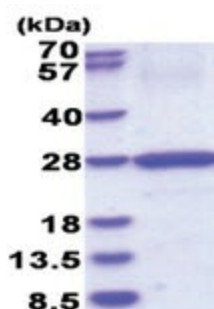
HLA-DOB belongs to the HLA class II beta chain paralogues. This class II molecule is a heterodimer consisting of an alpha (DOA) and a beta chain (DOB), both anchored in the membrane. It is located in intracellular vesicles. DO suppresses peptide loading of MHC class II molecules by inhibiting HLA-DM. Class II molecules are expressed in antigen presenting cells (APC: B lymphocytes, dendritic cells, macrophages). The beta chain is approximately 26-28 kDa and its gene contains 6 exons. Exon one encodes the leader peptide, exons 2 and 3 encode the two extracellular domains, exon 4 encodes the transmembrane domain and exon 5 encodes the cytoplasmic tail. [provided by RefSeq, Jul 2008]

Protein Families:

Transmembrane

Protein Pathways:

Allograft rejection, Antigen processing and presentation, Asthma, Autoimmune thyroid disease, Cell adhesion molecules (CAMs), Graft-versus-host disease, Systemic lupus erythematosus, Type I diabetes mellitus, Viral myocarditis

Product images:

15% SDS-PAGE (3ug)