

Product datasheet for **AR51482PU-S**

RSU1 / RSP1 (1-277, His-tag) Human Protein

Product data:

Product Type:	Recombinant Proteins
Description:	RSU1 / RSP1 (1-277, His-tag) human recombinant protein, 0.1 mg
Species:	Human
Expression Host:	E. coli
Expression cDNA Clone or AA Sequence:	MGSSHHHHHH SSGLVPRGSH MGSMSKSLKK LVEESREKNQ PEVDMSDRGI SNMLDVNGLF TLSHITQLVL SHNKLTMVPP NIAELKNLEV LNFFNNQIEE LPTQISSLQK LKHLNLGMNR LNTLPRGFGS LPALEVLDT YNNLSENSLP GNFFYLTLR ALYLSDNDFE ILPPDIGKLT KLQILSLRDN DLISLPKEIG ELTQLKELHI QGNRLTVLPP ELGNLDTGQ KQVFAENNP WVTPIADQFQ LGVSHVFEYI RSETYKYLYG RHMQANPEPP KKNNDKSKKI SRKPLAAKNR
Tag:	His-tag
Predicted MW:	33.9 kDa
Concentration:	lot specific
Purity:	>90% by SDS - PAGE
Buffer:	Presentation State: This purified protein is available in a denatured form, making it less suitable for functional studies. Denatured proteins are better suited for applications like Western Blot (WB) or imaging assays. State: Liquid purified protein Buffer System: 20 mM Tris-HCl buffer (pH 8.0) containing 0.4M Urea, 10% glycerol
Preparation:	Liquid purified protein
Protein Description:	Recombinant human RSU1 protein, fused to His-tag at N-terminus, was expressed in E.coli.
Storage:	Store undiluted at 2-8°C for one week or (in aliquots) at -20°C to -80°C for longer. Avoid repeated freezing and thawing.
Stability:	Shelf life: one year from despatch.
RefSeq:	NP_036557
Locus ID:	6251
UniProt ID:	Q15404
Cytogenetics:	10p13
Synonyms:	RSP-1, Rsu-1



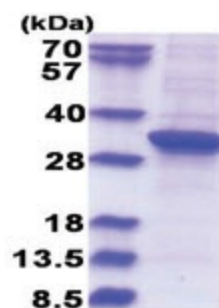
[View online »](#)

Summary:

This gene encodes a protein that is involved in the Ras signal transduction pathway, growth inhibition, and nerve-growth factor induced differentiation processes, as determined in mouse and human cell line studies. In mouse, the encoded protein was initially isolated based on its ability to inhibit v-Ras transformation. Multiple alternatively spliced transcript variants for this gene have been reported; one of these variants was found only in glioma tumors. [provided by RefSeq, Jul 2008]

Protein Families:

Druggable Genome

Product images:

15% SDS-PAGE (3ug)