

Product datasheet for **AR51481PU-S**

PLA1A (26-456, His-tag) Human Protein

Product data:

Product Type:	Recombinant Proteins
Description:	PLA1A (26-456, His-tag) human recombinant protein, 0.1 mg
Species:	Human
Expression Host:	E. coli
Expression cDNA Clone or AA Sequence:	MGSSHHHHHH SSGLVPRGSH MGSDAPPTPQ PKCADFQSAN LFEGTDLKVQ FLLFVPSNPS CGQLVEGSSD LQNSGFNATL GTKLIHGFR VLGTKPSWID TFIRTLRAT NANVIAVDWI YGSTGVYFSA VKNVIKLSLE ISLFLNKLLV LGVSESSIHI IGVSLGAHVG GMVGQLFGGQ LGQITGLDPA GPEYTRASVE ERLDAGDALF VEAHTDND LGIRIPVGHV DYFVNGGQDQ PGCPTFFYAG YSYLICDHMR AVHLYISALE NSCLMAFPC ASYKAFLAGR CLDCFNPFLL SCPRIGLVEQ GGVKIEPLPK EVKVYLLTTS SAPYCMHSL VEFHLKELRN KDTNIEVTFL SSNITSSSKI TIPKQRYGK GIIAHATPQC QINQVKFKFQ SSNRVWKKDR TTIIGKFACTA LLPVNDREKM VCLPEPVNLQ ASVTVSCDLK IACV
Tag:	His-tag
Predicted MW:	49.5 kDa
Concentration:	lot specific
Purity:	>80% by SDS - PAGE
Buffer:	Presentation State: This purified protein is available in a denatured form, making it less suitable for functional studies. Denatured proteins are better suited for applications like Western Blot (WB) or imaging assays. State: Liquid purified protein Buffer System: 20 mM Tris-HCl buffer (pH 8.0) containing 0.4M Urea, 10% glycerol
Preparation:	Liquid purified protein
Protein Description:	Recombinant human PLA1A protein, fused to His-tag at N-terminus, was expressed in E.coli.
Storage:	Store undiluted at 2-8°C for one week or (in aliquots) at -20°C to -80°C for longer. Avoid repeated freezing and thawing.
Stability:	Shelf life: one year from despatch.
RefSeq:	NP_001193889
Locus ID:	51365
UniProt ID:	Q53H76



[View online »](#)

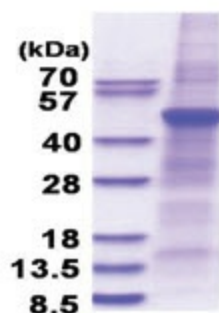
Cytogenetics: 3q13.33

Synonyms: NMD, PSPLA1, Phospholipase A1 member A

Summary: The protein encoded by this gene is a phospholipase that hydrolyzes fatty acids at the sn-1 position of phosphatidylserine and 1-acyl-2-lysophosphatidylserine. This secreted protein hydrolyzes phosphatidylserine in liposomes. Three transcript variants encoding different isoforms have been found for this gene.[provided by RefSeq, May 2011]

Protein Families: Druggable Genome, Secreted Protein

Product images:



15% SDS-PAGE (3ug)