

Product datasheet for **AR51481PU-N**

PLA1A (26-456, His-tag) Human Protein

Product data:

| | |
|---------------------------------------|--|
| Product Type: | Recombinant Proteins |
| Description: | PLA1A (26-456, His-tag) human recombinant protein, 0.5 mg |
| Species: | Human |
| Expression Host: | E. coli |
| Expression cDNA Clone or AA Sequence: | MGSSHHHHHH SSGLVPRGSH MGSDAPPTPQ PKCADFQSAN LFEGTDLKVQ FLLFVPSNPS CGQLVEGSSD LQNSGFNATL GTKLIHGFR VLGTKPSWID TFIRTLRAT NANVIAVDWI YGSTGVYFSA VKNVIKLSLE ISFLNKLLV LGVSESSIHI IGVSLGAHVG GMVGQLFGGQ LGQITGLDPA GPEYTRASVE ERLDAGDALF VEAHTDTDN LGIRIPVGHV DYFVNGGQDQ PGCPTFFYAG YSYLICDHMR AVHLYISALE NSCPLMAFPC ASYKAFLAGR CLDCFNPFLL SCPRIGLVEQ GGVKIEPLPK EVKVYLLTTS SAPYCMHSL VEFHLKELRN KDTNIEVTFL SSNITSSSKI TIPKQRYGK GIIAHATPQC QINQVKFKFQ SSNRVWKKDR TTIIGKFACTA LLPVNDREKM VCLPEPVNLQ ASVTVSCDLK IACV |
| Tag: | His-tag |
| Predicted MW: | 49.5 kDa |
| Concentration: | lot specific |
| Purity: | >80% by SDS - PAGE |
| Buffer: | Presentation State: Purified State: Liquid purified protein Buffer System: 20 mM Tris-HCl buffer (pH 8.0) containing 0.4M Urea, 10% glycerol |
| Preparation: | Liquid purified protein |
| Protein Description: | Recombinant human PLA1A protein, fused to His-tag at N-terminus, was expressed in E.coli. |
| Storage: | Store undiluted at 2-8°C for one week or (in aliquots) at -20°C to -80°C for longer. Avoid repeated freezing and thawing. |
| Stability: | Shelf life: one year from despatch. |
| RefSeq: | NP_001193889 |
| Locus ID: | 51365 |
| UniProt ID: | Q53H76 |
| Cytogenetics: | 3q13.33 |
| Synonyms: | PS-PLA1; PSPLA1 |



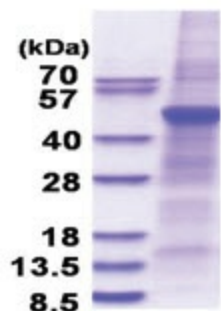
[View online »](#)

Summary:

The protein encoded by this gene is a phospholipase that hydrolyzes fatty acids at the sn-1 position of phosphatidylserine and 1-acyl-2-lysophosphatidylserine. This secreted protein hydrolyzes phosphatidylserine in liposomes. Three transcript variants encoding different isoforms have been found for this gene.[provided by RefSeq, May 2011]

Protein Families:

Druggable Genome, Secreted Protein

Product images:

15% SDS-PAGE (3ug)