

Product datasheet for **AR51480PU-S**

MMP-23 (79-254, His-tag) Human Protein

Product data:

Product Type:	Recombinant Proteins
Description:	MMP-23 (79-254, His-tag) human recombinant protein, 0.1 mg
Species:	Human
Expression Host:	E. coli
Expression cDNA Clone or AA Sequence:	MGSSHHHHHH SSGLVPRGSH MGSYTLTPAR LRWDHFNLTY RILSFPRNLL SPRETRRALA AAFRMWSDVS PFSFREVAPE QPSDLRIGFY PINHTDCLVS ALHHCDFGPT GELAHAFPPP HGGIHFDDSE YWVLGPTRY S WKKGVWLTDL VHVA AHEIGH ALGLMHSQHG RALMHLNATL RGWKALSQDE LWGLHRLYG
Tag:	His-tag
Predicted MW:	22.6 kDa
Concentration:	lot specific
Purity:	>85% by SDS - PAGE
Buffer:	Presentation State: Purified State: Liquid purified protein Buffer System: 20 mM Tris-HCl buffer (pH 8.0) containing 0.4M Urea, 10% glycerol
Preparation:	Liquid purified protein
Protein Description:	Recombinant human MMP23B protein, fused to His-tag at N-terminus, was expressed in E.coli.
Storage:	Store undiluted at 2-8°C for one week or (in aliquots) at -20°C to -80°C for longer. Avoid repeated freezing and thawing.
Stability:	Shelf life: one year from despatch.
RefSeq:	NP_008914
Locus ID:	8510
UniProt ID:	O75900
Cytogenetics:	1p36.33
Synonyms:	MIFR; MIFR-1; MMP22; MMP23A



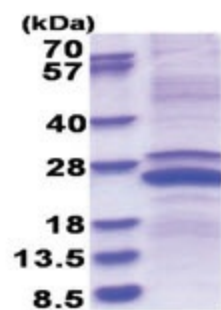
[View online »](#)

Summary:

This gene (MMP23B) encodes a member of the matrix metalloproteinase (MMP) family, and it is part of a duplicated region of chromosome 1p36.3. Proteins of the matrix metalloproteinase (MMP) family are involved in the breakdown of extracellular matrix in normal physiological processes, such as embryonic development, reproduction, and tissue remodeling, as well as in disease processes, such as arthritis and metastasis. This gene belongs to the more telomeric copy of the duplicated region. [provided by RefSeq, Jul 2008]

Protein Families:

Druggable Genome, Protease, Secreted Protein, Transmembrane

Product images:

15% SDS-PAGE (3ug)