

Product datasheet for **AR51469PU-S**

CD153 / CD30L (His-tag) Human Protein

Product data:

Product Type:	Recombinant Proteins
Description:	CD153 / CD30L (His-tag) human recombinant protein, 0.1 mg
Species:	Human
Expression Host:	E. coli
Expression cDNA Clone or AA Sequence:	MGSSHHHHHH SSGLVPRGSH MGSQRTDSIP NSPDNVPLKG GNCSEDLICI LKRAPFKKSW AYLQVAKHLN KTKLSWVKDG ILHGVRYQDG NLVIQFPGLY FIICQLQLFLV QCPNNSVDLK LELLINKHIK KQALVTVCES GMQTKHVYQN LSQFLLDYLQ VNTTISVNVD TFQYIDTSTF PLENVLSIFL YSNSD
Tag:	His-tag
Predicted MW:	22.0 kDa
Concentration:	lot specific
Purity:	>80% by SDS - PAGE
Buffer:	Presentation State: Purified State: Liquid purified protein Buffer System: 20 mM Tris-HCl buffer (pH 8.0) containing 10% glycerol, 0.4M Urea
Preparation:	Liquid purified protein
Protein Description:	Recombinant human TNFSF8 protein, fused to His-tag at N-terminus, was expressed in E.coli.
Storage:	Store undiluted at 2-8°C for one week or (in aliquots) at -20°C to -80°C for longer. Avoid repeated freezing and thawing.
Stability:	Shelf life: one year from despatch.
RefSeq:	NP_001235
Locus ID:	944
UniProt ID:	P32971 , Q52M88
Cytogenetics:	9q32-q33.1
Synonyms:	TNFSF8, CD30 Ligand, CD30LG, CD30-L



[View online »](#)

Summary:

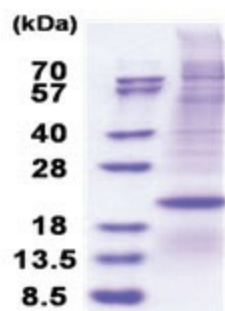
The protein encoded by this gene is a cytokine that belongs to the tumor necrosis factor (TNF) ligand family. This cytokine is a ligand for TNFRSF8/CD30, which is a cell surface antigen and a marker for Hodgkin lymphoma and related hematologic malignancies. The engagement of this cytokine expressed on B cell surface plays an inhibitory role in modulating Ig class switch. This cytokine was shown to enhance cell proliferation of some lymphoma cell lines, while to induce cell death and reduce cell proliferation of other lymphoma cell lines. The pleiotropic biologic activities of this cytokine on different CD30+ lymphoma cell lines may play a pathophysiologic role in Hodgkin's and some non-Hodgkin's lymphomas. Two transcript variants encoding different isoforms have been found for this gene. [provided by RefSeq, Nov 2011]

Protein Families:

Druggable Genome, Transmembrane

Protein Pathways:

Cytokine-cytokine receptor interaction

Product images:

15% SDS-PAGE (3ug)