

Product datasheet for **AR51466PU-S**

ZW10 interactor / ZWINT (1-230, His-tag) Human Protein

Product data:

Product Type:	Recombinant Proteins
Description:	ZW10 interactor / ZWINT (1-230, His-tag) human recombinant protein, 20 µg
Species:	Human
Expression Host:	E. coli
Expression cDNA Clone or AA Sequence:	MGSSHHHHHH SSGLVPRGSH MGSMEAAETE AAAAALEVLA EVAGILEPVG LQEEAELPAK ILVEFVDSQ KKDKLLCSQL QVADFLQNIL AQEDTAKGLD PLASEDTSRQ KAIAAKEQWK ELKATYREHV EAIKIGLTKA LTQMEEAQRK RTQLREAFEQ LQAKQMAME KRRAVQNQWQ LQQEKHLQHL AEVSAEGKLL FPEAEAEAEN LPDDKPQQPT RPQEQSTGDT MGRDPGVSFK AVGLQPAGDV NLP
Tag:	His-tag
Predicted MW:	27.9 kDa
Concentration:	lot specific
Purity:	>85% by SDS - PAGE
Buffer:	Presentation State: Purified State: Liquid purified protein Buffer System: 20 mM Tris-HCl buffer (pH 8.0) containing 0.15M NaCl, 20% glycerol, 1 mM DTT
Preparation:	Liquid purified protein
Protein Description:	Recombinant human ZWINT protein, fused to His-tag at N-terminus, was expressed in E.coli and purified by using conventional chromatography techniques.
Storage:	Store undiluted at 2-8°C for one week or (in aliquots) at -20°C to -80°C for longer. Avoid repeated freezing and thawing.
Stability:	Shelf life: one year from despatch.
RefSeq:	NP_001005413
Locus ID:	11130
UniProt ID:	O95229
Cytogenetics:	10q21.1
Synonyms:	HZwint-1; KNTC2AP; SIP30; ZWINT1



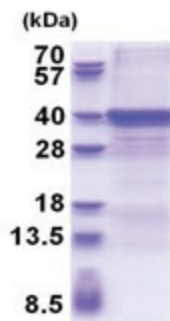
[View online »](#)

Summary:

This gene encodes a protein that is clearly involved in kinetochore function although an exact role is not known. It interacts with ZW10, another kinetochore protein, possibly regulating the association between ZW10 and kinetochores. The encoded protein localizes to prophase kinetochores before ZW10 does and it remains detectable on the kinetochore until late anaphase. It has a uniform distribution in the cytoplasm of interphase cells. Alternatively spliced transcript variants encoding different isoforms have been found for this gene. [provided by RefSeq, Jul 2008]

Protein Families:

Druggable Genome

Product images:

15% SDS-PAGE (3ug)