

## Product datasheet for **AR51459PU-N**

### CD5 (25-372, His-tag) Human Protein

#### Product data:

Product Type:	Recombinant Proteins
Description:	CD5 (25-372, His-tag) human recombinant protein, 0.5 mg
Species:	Human
Expression Host:	E. coli
Expression cDNA Clone or AA Sequence:	MGSSHHHHHH SSGLVPRGSH MGSRLSWYDP DFQARLTRSN SKCQGQLEVY LKDGWHMVCS QSWGRRSSKQW EDPSQASKVC QRLNCGVPLS LGPFLVTYTP QSSIICYGQL GSFSNCSHSR NDMCHSLGLT CLEPQKTTTP TTRPPPTTTP EPTAPPRLQL VAQSGGQHCA GVVEFYSGSL GGTISYEAQD KTQDLENFLC>NNLQCGSFLK HLPETEAGRA QDPGEPREHQ PLPIQWKIQN SSCTSLEHCF RKIKPQKSGR VLALLCSGFQ PKVQSRLVGG SSICEGTVEV RQGAQWAALC DSSSARSSLR WEEVCREQQC GSVNSYRVLD AGDPTSRGLF CPHQKLSQCH ELWERNYSYCK KVFVTCQDPN P
Tag:	His-tag
Predicted MW:	41.0 kDa
Concentration:	lot specific
Purity:	>80% by SDS - PAGE
Buffer:	Presentation State: Purified State: Liquid purified protein Buffer System: 20 mM Tris-HCl buffer (pH 8.0) containing 10% glycerol 0.4M Urea
Preparation:	Liquid purified protein
Protein Description:	Recombinant human CD5 protein, fused to His-tag at N-terminus, was expressed in E.coli.
Storage:	Store undiluted at 2-8°C for one week or (in aliquots) at -20°C to -80°C for longer. Avoid repeated freezing and thawing.
Stability:	Shelf life: one year from despatch.
RefSeq:	<a href="#">NP_001333385</a>
Locus ID:	921
UniProt ID:	<a href="#">P06127</a>
Cytogenetics:	11q12.2
Synonyms:	LEU1; T1



[View online »](#)

**Summary:**

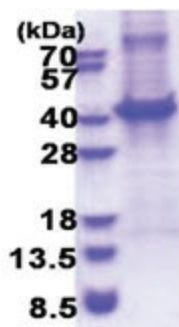
This gene encodes a member of the scavenger receptor cysteine-rich (SRCR) superfamily. Members of this family are secreted or membrane-anchored proteins mainly found in cells associated with the immune system. This protein is a type-I transmembrane glycoprotein found on the surface of thymocytes, T lymphocytes and a subset of B lymphocytes. The encoded protein contains three SRCR domains and may act as a receptor to regulate T-cell proliferation. Alternative splicing results in multiple transcript variants encoding different isoforms. [provided by RefSeq, Oct 2016]

**Protein Families:**

Druggable Genome, Transmembrane

**Protein Pathways:**

Hematopoietic cell lineage

**Product images:**

15% SDS-PAGE (3ug)