

## Product datasheet for **AR51446PU-S**

### LIPG (21-340, His-tag) Human Protein

#### Product data:

Product Type:	Recombinant Proteins
Description:	LIPG (21-340, His-tag) human recombinant protein, 0.1 mg
Species:	Human
Expression Host:	E. coli
Expression cDNA Clone or AA Sequence:	MGSSHHHHHH SSGLVPRGSH MGSSPVVFGP EGRLEDKLHK PKATQTEVKP SVRFNLRTSK DPEHEGCYLS VGHSQPLEDC SFNMTAKTFF IIHGWTMSGI FENWLHKLVS ALHTREK DAN VVVVDWLPLA HQLYTDVAVNN TRVVGHSIAR MLDWLQEKDD FSLGNVHLIG YSLGAHVAGY AGNFVKGTVG RITGLDPAGP MFEGADIHKR LSPDDADFVD VLHTYTRSFG LSIGIQMPVG HIDIYPNGGD FQPGCGLNDV LGSIAYGIT EVVKCEHERA VHLFVDSL VN QDKPSFAFQC TDSNRFKKGI CLSCRKNRCN SIGYNAKKMR NKRNSKMYLK TRA
Tag:	His-tag
Predicted MW:	38.0 kDa
Concentration:	lot specific
Purity:	>85% by SDS - PAGE
Buffer:	Presentation State: Purified State: Liquid purified protein Buffer System: 20 mM Tris-HCl buffer (pH 8.0) containing 10% glycerol, 0.4M Urea
Preparation:	Liquid purified protein
Protein Description:	Recombinant human LIPG protein, fused to His-tag at N-terminus, was expressed in E.coli .
Storage:	Store undiluted at 2-8°C for one week or (in aliquots) at -20°C to -80°C for longer. Avoid repeated freezing and thawing.
Stability:	Shelf life: one year from despatch.
RefSeq:	<a href="#">NP_001294935</a>
Locus ID:	9388
UniProt ID:	<a href="#">Q9Y5X9</a> , <a href="#">B4DTR8</a>
Cytogenetics:	18q21.1
Synonyms:	EDL; EL; PRO719



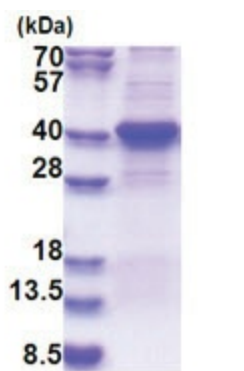
[View online »](#)

**Summary:** The protein encoded by this gene has substantial phospholipase activity and may be involved in lipoprotein metabolism and vascular biology. This protein is designated a member of the TG lipase family by its sequence and characteristic lid region which provides substrate specificity for enzymes of the TG lipase family. [provided by RefSeq, Jul 2008]

**Protein Families:** Druggable Genome, Secreted Protein

**Protein Pathways:** Glycerolipid metabolism, Metabolic pathways

**Product images:**



15% SDS-PAGE (3ug)