

Product datasheet for **AR51028PU-S**

Barttin (54-320, His-tag) Human Protein

Product data:

Product Type:	Recombinant Proteins
Description:	Barttin (54-320, His-tag) human protein, 20 µg
Species:	Human
Expression Host:	E. coli
Expression cDNA Clone or AA Sequence:	MGSSHHHHHH SSGLVPRGSH MGSCQCPYKI TFVPADSDFQ GILSPKAMGL LENGAAEMK SPSPQPPYVR LWEEAAYDQS LPDFSHIQMK VMSYSEDHRS LLAPEMGQPK LGTSDGGEGG PGDVQAWMEA AVVIHKGSD SEGERRLTQS WGPLACPQG PAPLASFQDD LDMSDSEGGSS PNASPHDREE ACSPQQEPQG CRCPLDRFQD FALIDAPTL DEPQEGQQWE IALPNNWQRY PRTKVEEKEA SDTGGEPEK EEEDLYYGLP DGAGDLLPDK ELGFEPDTQG
Tag:	His-tag
Predicted MW:	31.7 kDa
Concentration:	lot specific
Purity:	>90% by SDS - PAGE
Buffer:	Presentation State: Purified State: Liquid purified protein Buffer System: 20 mM Tris-HCl buffer (pH 8.0) containing 0.15M NaCl, 10% glycerol, 1 mM DTT
Preparation:	Liquid purified protein
Storage:	Store undiluted at 2-8°C for one week or (in aliquots) at -20°C to -80°C for longer. Avoid repeated freezing and thawing.
Stability:	Shelf life: one year from despatch.
RefSeq:	NP_476517
Locus ID:	7809
UniProt ID:	Q8WZ55 , Q5VU50
Cytogenetics:	1p32.3
Synonyms:	BART; DFNB73



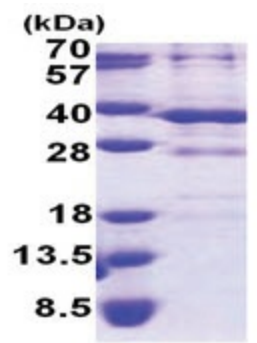
[View online »](#)

Summary:

This gene encodes an essential beta subunit for CLC chloride channels. These heteromeric channels localize to basolateral membranes of renal tubules and of potassium-secreting epithelia of the inner ear. Mutations in this gene have been associated with Bartter syndrome with sensorineural deafness. [provided by RefSeq, Jul 2008]

Protein Families:

Druggable Genome, Transmembrane

Product images:

15% SDS-PAGE (3ug)