

## Product datasheet for **AR51003PU-S**

### Musashi-2 (1-328, His-tag) Human Protein

#### Product data:

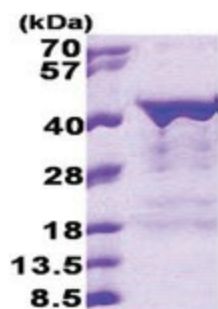
Product Type:	Recombinant Proteins
Description:	Musashi-2 (1-328, His-tag) human protein, 20 µg
Species:	Human
Expression Host:	E. coli
Expression cDNA Clone or AA Sequence:	MGSSHHHHHH SSGLVPRGSH MGSMEANGSQ GTSGSANDSQ HDPGKMFIGG LSWQTSPDSL RDYFSKFGEI RECMVMRDPT TKRSRGFGFV TFADPASVDK VLGQPHHELD SKTIDPKVAF PRRAQPKMVT RTKKIFVGGL SANTVVEDVK QYFEQFGKVE DAMLMFDKTT NRHRGFGFVT FENEDVVEKV CEIHFHEINN KMVECKKAQP KEVMFPPGTR GRARGLPYTM DAFMLGMGML GYPNFVATYG RGYPGFAPSY GYQFPGFPAA AYGPVAAA AV AAARGSGSNP ARPGGFPGAN SPGPVADLYG PASQDSGVGN YISAASPQPG SGFGHGIAGP LIATAFTNGY H
Tag:	His-tag
Predicted MW:	37.6 kDa
Concentration:	lot specific
Purity:	>90% by SDS - PAGE
Buffer:	Presentation State: Purified State: Liquid purified protein Buffer System: 20 mM Tris-HCl buffer (pH 8.0) containing 0.15M NaCl, 10% glycerol, 1 mM DTT
Preparation:	Liquid purified protein
Storage:	Store undiluted at 2-8°C for one week or (in aliquots) at -20°C to -80°C for longer. Avoid repeated freezing and thawing.
Stability:	Shelf life: one year from despatch.
RefSeq:	<a href="#">NP_001309179</a>
Locus ID:	124540
UniProt ID:	<a href="#">B4DHE8</a>
Cytogenetics:	17q22
Synonyms:	MSI2H



[View online »](#)

**Summary:**

This gene encodes an RNA-binding protein that is a member of the Musashi protein family. The encoded protein is transcriptional regulator that targets genes involved in development and cell cycle regulation. Mutations in this gene are associated with poor prognosis in certain types of cancers. This gene has also been shown to be rearranged in certain cancer cells. [provided by RefSeq, Apr 2016]

**Product images:**

15% SDS-PAGE (3ug)