

Product datasheet for **AR50998PU-S**

KLF7 (1-302, His-tag) Human Protein

Product data:

Product Type:	Recombinant Proteins
Description:	KLF7 (1-302, His-tag) human protein, 0.1 mg
Species:	Human
Expression Host:	E. coli
Expression cDNA Clone or AA Sequence:	MGSSHHHHHH SSGLVPRGSH MGSMDVLASY SIFQELQLVH DTGYFSALPS LEETWQQTCL ELERYLQTEP RRISETFGED LDCFLHASPP PCIEESFRRL DPLLLPVEAA ICEKSSAVDI LLSRDKLLSE TCLSLQPASS SLDSYTAVNQ AQLNAVTLT PPSSPELSRH LVKTSQTLA VDGTVTLKLV AKKAALSSVK VGGVATAAAA VTAAGAVKSG QSDSDQGGLG AEACPENKKR VHRCQFNGCR KVYTKSSHLK AHQRHTGK PYKCSWEGCE WRFARSDDEL RHYRKHTGAK PFKCNHCDCR FSRSDHLALH MKRHI
Tag:	His-tag
Predicted MW:	35.8 kDa
Concentration:	lot specific
Purity:	>85 % by SDS - PAGE
Buffer:	Presentation State: Purified State: Liquid purified protein Buffer System: 20 mM Tris-HCl buffer (pH 8.0) containing 0.4M urea, 10% glycerol
Preparation:	Liquid purified protein
Storage:	Store undiluted at 2-8°C for one week or (in aliquots) at -20°C to -80°C for longer. Avoid repeated freezing and thawing.
Stability:	Shelf life: one year from despatch.
RefSeq:	NP_001257871
Locus ID:	8609
UniProt ID:	O75840
Cytogenetics:	2q33.3
Synonyms:	UKLF



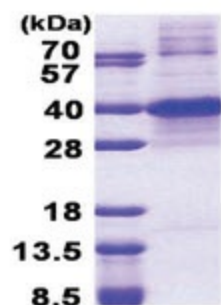
[View online »](#)

Summary:

The protein encoded by this gene is a member of the Kruppel-like transcriptional regulator family. Members in this family regulate cell proliferation, differentiation and survival and contain three C2H2 zinc fingers at the C-terminus that mediate binding to GC-rich sites. This protein may contribute to the progression of type 2 diabetes by inhibiting insulin expression and secretion in pancreatic beta-cells and by deregulating adipocytokine secretion in adipocytes. A pseudogene of this gene is located on the long arm of chromosome 3. Alternative splicing results in multiple transcript variants. [provided by RefSeq, Aug 2012]

Protein Families:

Transcription Factors

Product images:

15% SDS-PAGE (3ug)